

**TAXONOMIC AND PRESERVATION ASSESSMENT OF THE IRIDACEAE
COLLECTION HOUSED IN THE HERBARIUM OF
THE BOTANIC GARDEN “D. BRANDZA” (BUC)**

BĂLAN Angela-Laura¹, CAMEN-COMĂNESCU Petronela^{2*},
URZICEANU Mihaela¹

Abstract: This study provides a detailed overview of the Iridaceae family housed within the Herbarium of the "D. Brandza" Botanic Garden, University of Bucharest (BUC). As part of an ongoing digitization initiative, the collection was meticulously inventoried, and the label data was integrated into the herbarium database. Our analysis reveals a collection of 392 specimens, comprising 62 species and infraspecific taxa within 15 genera, out of which a notable mention is the community-interest species *Iris aphylla* subsp. *hungarica*. This collection includes native Romanian flora, as well as specimens collected from various parts of the world by 73 collectors, between 1908 and 2018.

Keywords: Iridaceae family, BUC, digitization, Herbarium

Received: 29 September 2025 / Accepted: 06 November 2025

Introduction

The Iridaceae family, with its approximately 2,572 species and 69 genera worldwide, is one of the most widespread and aesthetically captivating plant families in the Plantae kingdom (Christenhusz et al. 2017). Its name, derived from the Greek goddess of the rainbow, Iris, aptly alludes to the stunning chromatic diversity and beauty found within its flowers (Ilieva 2021). Beyond their inherent aesthetic value, species within the Iridaceae family hold significant ecological, economic, and cultural importance. For instance, the stigmas of *Crocus sativus* L. are the source of the precious saffron (Negbi 1999), while extracts from *Iris* roots have been historically used in the beverage industry and traditional Eurasian medicine (Crișan & Cantor 2016). Additionally, numerous genera, such as *Iris* and *Gladiolus*, are widely cultivated as ornamental plants, contributing to local and global horticulture (Crișan et al. 2017).

In the context of growing environmental challenges and biodiversity loss, herbaria collections are more crucial than ever (Heberling 2022). These institutions serve as invaluable repositories of botanical information, functioning as true biological data banks that preserve knowledge for both present and future generations (Marín-Rodulfo et al. 2024). Their primary and original purpose is to provide a foundation for taxonomic research, allowing scientists to revisit and study specimens collected over decades and even centuries to better understand their morphological characteristics (Greve et al. 2016). However, in the current technological era, herbaria have transcended their traditional role, branching out beyond their taxonomic implications into fields such as ecology, anthropology, and genomics (Nualart et al. 2017).

¹ University of Bucharest, Faculty of Biology, Intr. Portocalelor 1-3, 060110-Bucharest, Romania.

² University of Bucharest, Botanic Garden „D. Brandza”, Șos. Cotroceni 32, 060114-Bucharest, Romania

* Correspondence: petronela.camen-comanescu@unibuc.ro

Despite their immense value, the use of historical herbarium specimens presents certain challenges (Lang et al. 2019). The material can be fragile and susceptible to physical degradation from insects or improper storage conditions (Meineke et al. 2018). Furthermore, the lack of complete collection data or identification errors can limit their full potential (Nic Lughadha et al. 2019). To overcome these obstacles and enhance the accessibility of these collections, the process of digitization has become a global priority (James et al. 2018). By transforming physical specimens into a digital format, the need for physical handling and transport is minimized, thus contributing significantly to their preservation (De Smedt et al. 2024). This process has also unlocked new avenues for interdisciplinary, large-scale analyses, making previously inaccessible data readily available to the global scientific community (James et al. 2018).

In order to enhance accessibility to its collections, in 2016 our herbarium has also started a process of re-inventory and digitization. To date, five collections have been published: the brown algae collection (Urziceanu et al. 2017), the red algae collection (Urziceanu et al. 2018), the threatened vascular plant collection (Camen-Comănescu et al. 2020), the *Artemisia* genus collection (Urziceanu et al. 2024) and the Orchidaceae family collection (Bălan et al. 2024). To these collections, we now add the Iridaceae family. By providing a comprehensive overview of the collection, we aim to highlight its scientific value as a resource for future research, contributing to the ongoing global effort of preserving botanical heritage and making scientific data more accessible.

Material and methods

The digitization of the BUC Herbarium's Iridaceae collection involved scanning and recording each herbarium sheet into a Microsoft Excel database. Certain sheets showed signs of deterioration due to their age and were carefully restored where necessary to preserve their integrity. The specimens were scanned at a resolution of 600 dpi using a Herbscan scanner. The resulting TIF images were then transferred to an external drive for secure, long-term storage.

The data from the labels was meticulously transcribed into the Excel database without any modifications, ensuring the authenticity of the original records. The database includes identity and collection metadata, with the following fields: Valid Name, Original Taxon Name, Continent, Country, Region, County, Locality, Toponym, Geographical Coordinates, Altitude, Ecology, Day, Month, Year, Legit, Determinavit, Exsiccata, Herbaria, BUC Inventory Number. The taxon name is broken down into distinct fields: genus, species, author, subspecies, variety, and form, separated by “/”.

POWO (2025) and WFO (2025) databases were used for taxonomic name validation. Collection details were recorded exactly as they appeared on the labels. When only locality data were available, supplementary geographical information such as region and county was researched based on the location. To ensure consistency, toponyms were recorded in their original language. Ecological descriptions, on the other hand, were translated into English, unless the original label was already in English or Latin. For specimens missing the collector's or identifier's name, “unknown” was used. Information that could not be deciphered, whether due to unclear handwriting or the degradation of the text over time, was marked as “illegible”.

In cases where an inventory number was missing or if multiple sheets shared the same number, a new one was assigned, and the specimen was recorded in the inventory log.

For hybrid taxa, the hybrid formula was added after the inventory number.

Following the database creation, several aspects were analysed, including taxonomic affiliation, species richness, spatial-temporal distribution, conservation status, collectors, as well as the exsiccata and herbarium of origin.

Appendix 1 lists the Iridaceae specimens from the BUC Herbarium, with 392 specimens classified alphabetically by valid name, while Appendix 2 lists the number of specimens for each valid name (62 total). Appendix 3 depicts the number of specimens attributed to each collector, while in Appendix 4 are recorded the herbarium of provenience and exsiccata.

Finally, Appendix 5 details the Iridaceae taxa with conservation value from the BUC Herbarium, based on the works of Oltean et al. (1994), Boşcaiu et al. (1994), Dihoru & Negrean (2009), Dihoru & Dihoru (1993-1994), as well as the IUCN Red List of Threatened Species (2025), the EU Habitats Directive (European Union 1992) and Bern Convention (Council of Europe 2011). The conservation categories are abbreviated as follows: Rare (R) Vulnerable (V) No Longer Threatened (O) Endangered (E) CR - Critically Endangered LR - Low Risk EN - Endangered VU - Vulnerable LC - Least Concern NT - Near Threatened.

Results and discussion

The BUC Herbarium's Iridaceae collection holds a total of 392 specimens, comprising 62 species and infraspecific taxa within 15 genera (Fig. 1). The collection is dominated by the genus *Iris* (160 occurrences), followed by *Crocus* with 123 occurrences and *Gladiolus* with 57 occurrences. In contrast, the genus *Klattia* is the least represented, with only one specimen. This limited representation is due to the fact that this genus is not part of the native flora of Romania (POWO 2025), having been received as a donation from South Africa.

The three most recurrent species in the collection (Fig. 2) are *Gladiolus imbricatus* L. with 51 specimens, *Crocus heuffelianus* Herb. with 29 specimens, and *Iris pseudacorus* L. with 25 specimens. The least common species, having been identified only once, are: *Aristea racemosa* Baker, *Aristea spiralis* (L.f.) Ker Gawl., *Gladiolus × hybridus* C.Morren, *Gladiolus communis* L., *Gladiolus vandermerwei* (L.Bolus) Goldblatt & M.P.de Vos, *Iris iberica* Steven, *Iris imbricata* Lindl., *Iris latifolia* (Mill.) Voss, *Iris orientalis* Mill., *Iris pontica* Zapal., *Iris reticulata* M.Bieb., *Iris spuria* L., *Iris stocksii* (Baker) Boiss., *Klattia stokoei* L.Guthrie, *Moraea brachygyne* (Schltr.) Goldblatt, *Moraea lurida* Ker Gawl., *Moraea polyanthos* L.f. and *Sisyrinchium montanum* Greene.

We have also identified 14 hybrid specimens: *Crocoshmia × crocosmiiflora* (Lemoine) N.E.Br., *Freesia × kewensis* J.Wright bis, *Gladiolus × hybridus* C.Morren, *Iris × florentina* L. și *Iris × germanica* L., originating from the former living plant collection of the outdoor sections of the Botanic Garden (Appendix 1).

During the study of the collection, several identification and inventory errors were found and subsequently corrected. Five sheets were identified as duplicates, having identical inventory numbers. According to current collection management rules at the BUC Herbarium, this is no longer accepted, so new inventory numbers were assigned.

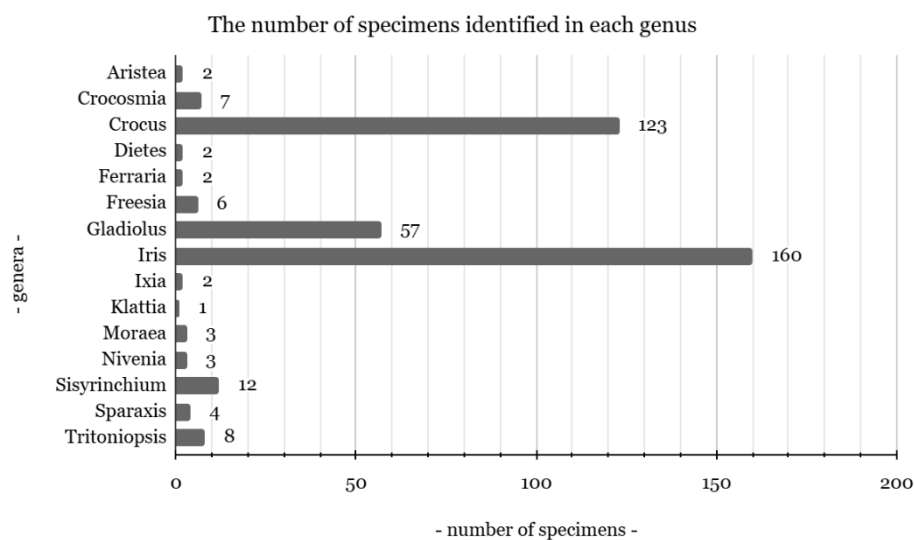


Fig. 1. The number of specimens identified in each genus



Fig. 2. The taxa with the highest number of specimens (left - *Gladiolus imbricatus*, center – *Crocus heuffelianus*, right – *Iris pseudacorus*).

All specimens of *Crocus vernus* (L.) Hill, *Crocus weldenii* Hoppe & Furnr., and *Crocus reticulatus* Steven ex Adams were revised to *Crocus heuffelianus* Herb., *Crocus chrysanthus* (Herb.) Herb., and *Crocus danubensis* Kernd., Pasche, Randjel. & V.Randjel, respectively, in accordance with the 2021 article on the distribution of *Crocus* species in Romania by Anastasiu et al. Likewise, specimens of *Crocus variegatus* Hoppe & Hornsch. collected in Romania (excluding those from the Botanical Garden) were also revised to *Crocus danubensis* (Anastasiu et al., 2021).

Specimen BUC361233 was revised from *Crocus heuffelianus* Herb. to *Crocus banaticus* Heuff. by H. Kendorff, while specimens BUC315763 and BUC315764 were corrected from *Iris bucegica* Beldie to *Iris aphylla* subsp. *hungarica* (Waldst. & Kit.) Dostál according to Anastasiu et al. (2021).

We have also revised specimen BUC184026 from *Iris dacica* Beldie to *Iris* × *germanica*, specimen BUC184034 from *Iris* × *germanica* L. to *Iris sintenisii* Janka, specimen BUC184070 from *Iris macrocarpa* Prodan to *Iris pumila* L., and specimens BUC184035 and BUC184036 from *Iris graminea* L. to *Iris lactea* Pall.

It is also important to note that the species *Gladiolus communis* L. is not native to Romania. Although it is recorded as being collected from Cămpurelu village, Giurgiu County, there is no mention of it being collected from the wild. Therefore, it is most likely an ornamental species cultivated for decorative purposes.

The BUC Iridaceae collection comprises specimens from three continents (Africa, Asia, Europe) and six countries, with the following distribution: 90.56% from Romania, 6.63% from South Africa, 1.53% from Iran, 0.51% from Greece, 0.51% from Moldova, and 0.25% from Turkey.

Of the specimens collected from Romania (355 in total), 116 were sourced from the “D. Brândza” Botanic Garden. The exact origin of these plants is unknown, as the labels did not provide any details regarding the provenance of the seeds or plants from which they were harvested. Currently, the following taxa are still present in the Botanic Garden's collection of living plants: *Crococsmia* × *crococsmiiflora* (Lemoine) N.E.Br., *Crocus chrysanthus* (Herb.) Herb., *Crocus flavus* Weston, *Crocus olivieri* J.Gay, *Crocus pallasii* Goldb., *Crocus variegatus* Hoppe & Hornsch., *Gladiolus* × *hybridus* C.Morren, *Gladiolus illyricus* W.D.J.Koch, *Iris* × *germanica* L., *Iris aphylla* L., *Iris graminea* L., *Iris halophila* Pall., *Iris lactea* Pall., *Iris variegata* L., and *Iris pontica* Zapal.

The remaining 239 specimens from Romania were collected from all of the country's regions: 33.89% from Muntenia, 18.82% from Transilvania, 13.38% from Dobrogea, 7.94% from Maramureş, 5.85% from Bucovina, 4.18% from Moldova, 3.34% from Oltenia, 2.51% from Banat, and 1.25% from Crişana.

The 37 specimens collected from regions outside of Romania are from Basarabia (Moldova), Northern Cape (South Africa), Western Cape (South Africa), Gauteng (South Africa), East Azerbaijan (Iran), Tehran (Iran), Mazandaran (Iran), Golestan (Iran), West Azerbaijan (Iran), Eastern Anatolia (Turkey), and Eastern Macedonia and Thrace (Greece).

In some cases, the information on the labels was insufficient; therefore, the region was not identified in 21 cases, whereas the county is missing from 23 sheets. The county with the most specimens in Romania is Ilfov (30), closely followed by Constanţa (27), Cluj (19), Maramureş (19), and Prahova (17).

The temporal distribution of the collection was also examined (Fig. 3 & Fig. 4). The data show that the peak month for collecting Iridaceae specimens was May (96 specimens), while the decade with the highest number of additions was 1960-1969 (103 specimens).

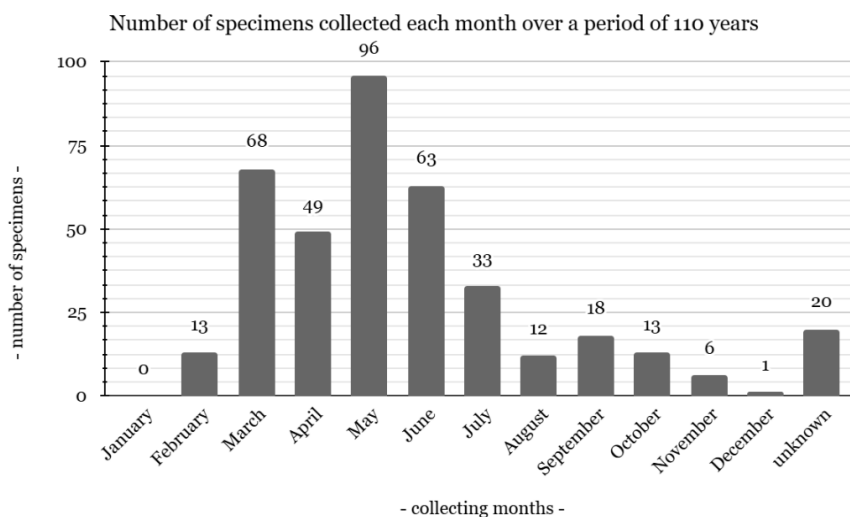


Fig. 3. Number of specimens collected each month over a period of 110 years

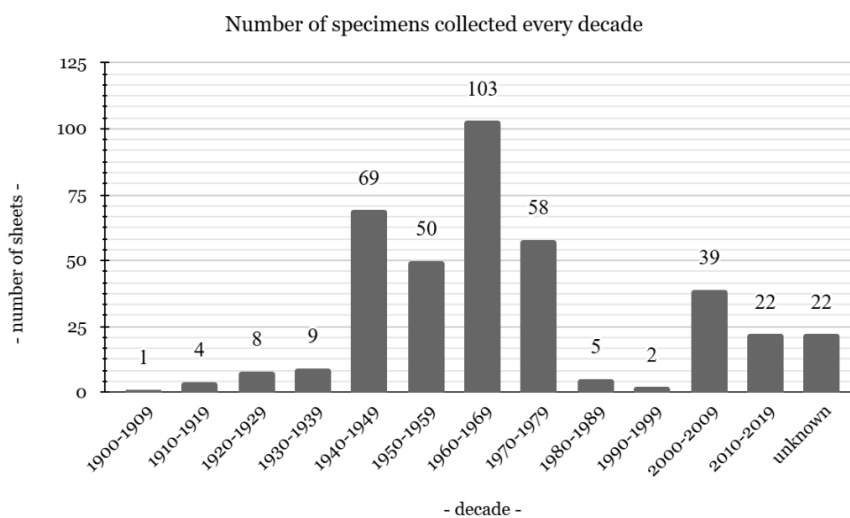


Fig. 4. Number of Iridaceae specimens collected per decade

Furthermore, the temporal study revealed that the earliest specimen (BUC182003) is represented by *Crocus heuffelianus* Herb and dates back to April 2, 1908, whilst the latest addition (BUC409695) - *Iris pumila* L., was collected on April 17, 2018 (Fig. 5).



Fig. 5. The oldest (left - *Crocus heuffelianus*) and most recent (right - *Iris pumila*) herbarium sheets

Among the most prolific collectors are S. Mihăilescu (48 occurrences), P. Anastasiu (46 occurrences), I. Morariu (24 occurrences), M. Guşuleac (19 occurrences), and Al. Borza (18 occurrences). Other notable contributors include A. Beldie, Al. Buia, G. Negrean, A. Paucă, and I.T. Tarnavski. The full list of collectors can be found in Appendix 3.

For 38 specimens, the collector is recorded as “unknown”, reflecting either unattributed work or contributions that were not clearly documented. In eight other cases, the collector’s name was marked as “illegible”, meaning it could not be deciphered from the original labels. Such gaps illustrate the difficulties in preserving accurate historical data, which may complicate botanical research based on herbarium collections.

In the BUC Herbarium’s Iridaceae collection, 117 of the 392 sheets (29.84%) were donated by eight Exsiccatae and four Herbaria. The most prominent among these are the National Botanic Gardens of South Africa, Kirstenbosch, Newlands, C.P. (26 sheets), Flora Romaniae Exsiccata a Horto et Museo Botanico Universitatis Clujensis Edita (19 sheets), and Herbarium I. Morariu (17 sheets). The complete list is provided in Appendix 4.

The conservation status of the taxa was also assessed, with full details available in Appendix 5. Even though the infrataxon *Iris aphylla* subsp. *hungarica* (Waldst. & Kit.) Dostál is a synonym of *Iris aphylla* L. (POWO, 2025), its conservation status in Romania differs from that of the species, which is why they were examined separately.

Among the identified taxa, 14 are listed in the red lists provided by Oltean et al. (1994), Boşcaiu et al. (1994), and Dihoru & Dihoru (1993-1994), while seven taxa are included in the Red Book (Dihoru & Negrean 2009).

The majority of the taxa listed in the red lists are considered either rare or vulnerable, although we have also identified species classified as endangered. Based on Boşcaiu et al. (1994), two taxa are vulnerable (*Crocus flavus* Weston, and *Iris sibirica* L.), while four are rare (*Crocus chrysanthus* (Herb.) Herb., *Crocus pallasii* Goldb., *Gladiolus illyricus* W.D.J.Koch, and *Iris sintenisii* Janka). According to Dihoru & Dihoru (1993-1994), five species are classified as vulnerable (*Crocus flavus* Weston, *Crocus pallasii* Goldb., *Iris halophila* Pall., *Iris spuria* L., and *Iris sintenisii* Janka), three as rare (*Gladiolus imbricatus* L., *Iris aphylla* L., and *Iris sibirica* L.), and three as endangered (*Crocus chrysanthus* (Herb.) Herb., *Crocus olivieri* J.Gay, and *Gladiolus illyricus* W.D.J.Koch). Furthermore, six specimens are present in the Red Book with specific classifications: one as vulnerable (*Crocus chrysanthus* Herb.), two as low risk (*Iris sintenisii* Janka and *Iris sintenisii* subsp. *brandzae* (Prodan) D.A.Webb & Chater), one as endangered (*Crocus pallasii* Goldb.), and two as critically endangered (*Gladiolus illyricus* W.D.J.Koch and *Iris pontica* Zapal).

Some species in our collection are also included in the global and European IUCN Red Lists (2025), with varying conservation statuses. At the European level, two species are classified as near threatened: *Iris aphylla* L. and *Iris sibirica* L.

Additionally, *Iris aphylla* subsp. *hungarica* (Waldst. & Kit.) Dostál is classified as a taxon of community interest under the EU Habitats Directive (Uniunea Europeană 1992), while both *Iris aphylla* subsp. *hungarica* (Waldst. & Kit.) Dostál and *Iris humilis* subsp. *arenaria* (Waldst. & Kit.) Á. Löve & D. Löve are listed in the Revised Annex I of Resolution 6 (1998) of the Bern Convention (Council of Europe 2011).

Conclusions

The Iridaceae collection housed at the BUC Herbarium, an essential resource for taxonomic research and biodiversity conservation, represents a link between a century of botanical exploration and today's urgent conservation efforts. By documenting and digitizing the 392 specimens, we have transformed a static archive into a dynamic resource for scientific discovery. This work not only secures the legacy of these fragile specimens for future generations but also rectifies taxonomic inconsistencies, actively contributing to data validation. We hope that publishing this data will stimulate new research directions and solidify the BUC Herbarium's role in preserving flora at both a national and international level.

Acknowledgements. This work was made possible with the kind support of Professor Paulina Anastasiu, director of the "D. Brandza" Botanic Garden, University of Bucharest. We also thank technician Monica Conţeanu for supervising the scanning of the herbarium sheets.

Author contributions: A.L.B. entered data into the database, scanned the sheets, and drafted the first version of the article. P.C.C. guided the digitization process and provided resources. M.U. coordinated the student's work, conceptualized the study, structured the article. Both P.C.C. and M.U. reviewed and validated the database and final manuscript.

References

- Anastasiu, P., Camen-Comănescu, P., Urziceanu, M., Calotă, A.M. & Negrean, G. (2021). Distribution of the *Crocus* species in Romania. *Acta Horti Botanici Bucurestiensis*, 47, 67-104.
- Bălan, A.L., Andra, B.I., Camen-Comănescu, P. & Urziceanu, M. (2024). Unlocking the Orchidaceae collection of the “D. Brandza” Herbarium (Buc): a student-driven collaborative effort. *Acta Horti Botanici Bucurestiensis*, 50, 59-102.
- Boşcaiu, N., Coldea, G. & Horeanu, C. (1994). Lista Roşie a plantelor vasculare dispărute, periclitare, vulnerabile şi rare din flora României. *Ocrot. nat. med. înconj.*, 38(1), 45-56.
- Camen-Comănescu, P., Coţeanu, M. & Nagodă, E. (2020). Threatened vascular plants from BUC Herbarium (I). *Acta Horti Botanici Bucurestiensis*, 46, 55–105.
- Christenhusz, M.J., Fay, M.F. & Chase, M.W. (2017). *Plants of the world: an illustrated encyclopedia of vascular plants*. Chicago: University of Chicago Press.
- Council of Europe. (2011). *Convention on the Conservation of European Wildlife and Natural Habitats: Revised Annex I of Resolution No. 6 (1998) of the Standing Committee to the Bern Convention*. Strasbourg: Council of Europe. Retrieved 23 September, 2025, from: <https://cas.coe.int/>
- Crisan, I. & Cantor, M. (2016). New perspectives on medicinal properties and uses of *Iris* sp. *Hop and Medicinal Plants*, 24(1-2), 24-36.
- Crişan, I., Vidican, R., Stoian, V. & Stoie, A. (2017). Wild *Iris* spp. from Romanian meadows and their importance for ornamental plant breeding. *Romanian Journal of Grassland and Forage Crops*, 16, 21-32.
- De Smedt, S., Bogaerts, A., De Meeter, N., Dillen, M., Engledow, H., Van Wambeke, P., Leliaert, F. & Groom, Q. (2024). Ten lessons learned from the mass digitisation of a herbarium collection. *PhytoKeys*, 244, 23-37.
- Dihoru, G. & Dihoru, A. (1993-1994). Plante rare, periclitare şi endemice în Flora României - Lista roşie. *Acta Horti Botanici Bucurestiensis*, 1994(23), 173-197.
- Dihoru, G. & Negrean, G. (2009). *Cartea roşie a plantelor vasculare din România*. Bucureşti: Edit. Academiei Române.
- Greve, M., Lykke, A.M., Fagg, C. W., Gereau, R.E., Lewis, G.P., Marchant, R., Marshall, A.R., Ndayishimiye, J., Bogaert, J. & Svenning, J.C. (2016). Realising the potential of herbarium records for conservation biology. *South African Journal of Botany*, 105, 317-323.
- Heberling, J.M. (2022). Herbaria as big data sources of plant traits. *International Journal of Plant Sciences*, 183(2), 87-118.
- Ilieva, I. (2021). Names of botanical genera inspired by mythology. *GSC Biol. Pharm. Sci*, 14(3), 008-018.
- IUCN (2025). *The IUCN Red List of Threatened Species*. Retrieved 23 September, 2025, from: <https://www.iucnredlist.org>.
- James, S.A., Soltis, P.S., Belbin, L., Chapman, A.D., Nelson, G., Paul, D.L. & Collins, M. (2018). Herbarium data: Global biodiversity and societal botanical needs for novel research. *Applications in plant sciences*, 6(2), e1024.
- Lang, P.L., Willems, F.M., Scheepens, J.F., Burbano, H.A. & Bossdorf, O. (2019). Using herbaria to study global environmental change. *New Phytologist*, 221(1), 110-122.

- Marín-Rodulfo, M., Rondinel-Mendoza, K.V., Martín-Girela, I., Cañadas, E.M. & Lorite, J. (2024). Old meets new: Innovative and evolving uses of herbaria over time as revealed by a literature review. *Plants, People, Planet*, 6(6), 1261-1271.
- Meineke, E.K., Davis, C.C. & Davies, T.J. (2018). The unrealized potential of herbaria for global change biology. *Ecological Monographs*, 88(4), 505-525.
- Negbi, M. (1999). *Saffron: Crocus sativus L.* Singapore: Hardwood Academic Publishers.
- Nic Lughadha, E., Walker, B.E., Canteiro, C., Chadburn, H., Davis, A.P., Hargreaves, S., Lucas, E.J., Schuiteman, A., Williams, E., Bachman, S.P., Baines, D., Barker, A., Budden, A.P., Carretero, J., Clarkson, J.J., Roberts, A. & Rivers, M.C. (2018). The use and misuse of herbarium specimens in evaluating plant extinction risks. *Philosophical transactions of the Royal Society B*, 374, 20170402.
- Nualart, N., Ibáñez, N., Soriano, I. & López-Pujol, J. (2017). Assessing the relevance of herbarium collections as tools for conservation biology. *The Botanical Review*, 83(3), 303-325.
- Oltean, M., Negrean, G., Popescu, A., Roman, N., Dihoru, G., Sanda, V. & Mihăilescu, S. (1994). Lista Roșie a plantelor superioare din România. Academia Română-Institutul de Biologie. *Studii, Sinteze, Documentații de Ecologie*, 1,1-52.
- POWO (2025). *Plants of the World Online*. Facilitated by the Royal Botanic Gardens, Kew. Retrieved 23 September, 2025, from: <https://powo.science.kew.org/>.
- Uniunea Europeană. (1992). Directiva 92/43/CEE a Consiliului din 21 mai 1992 privind conservarea habitatelor naturale și a speciilor de faună și floră sălbatică. Jurnalul Oficial al Uniunii Europene, L 206, 7–50. Retrieved 23 September, 2025, from: <https://eur-lex.europa.eu/legal-content/RO/TXT/?uri=CELEX%3A31992L0043>
- Urziceanu, M., Akyniyazova, A., Sîrbu, I.M. & Anastasiu, P. (2024). Species of the *Artemisia* genus in the herbarium of the Botanic Garden “D. Brandza”, University of Bucharest. *Acta Horti Botanici Bucurestiensis*, 50, 103-124.
- Urziceanu, M., Anastasiu, P. & Crăciun, I. (2017). Brown algae collection of the herbarium of the Botanic Garden “D. Brandza”, University of Bucharest. *Acta Horti Botanici Bucurestiensis*, 44, 111–146.
- Urziceanu, M., Nagodă, E., Iordache, C., Crăciun, I. & Anastasiu, P. (2018). The red algae collection of the Botanic Garden “D. Brandza” Herbarium, University of Bucharest. *Acta Horti Botanici Bucurestiensis*, 45, 65–195.
- WFO (2025). *World Flora Online*. Retrieved 23 September, 2025, from: <http://www.worldfloraonline.org>.

Appendix 1 List of the Iridaceae specimens from BUC Herbarium: Valid name / Taxon name / Continent / Country / Region / County / Locality / Toponym / Geographical coordinates / Altitude / Ecology / Day / Month / Year / Legit / Determinavit / Exsiccata / Herbaria / BUC Inventory number / Hybrid Formula

1. *Aristea racemosa* Baker / *Aristea* / racemosa / Bak. / Africa / South Africa / Western Cape / Munții Langeberg / fairly common in marshy ground on foothills of Langeberg / 3 / December / 1958 / Lewis G. J. / Lewis G. J. / National Botanic Gardens of South Africa, Kirstenbosch, Newlands, C.P. / BUC 350321
2. *Aristea spiralis* (L.f.) Ker Gawl. / *Aristea* / spiralis / (L.f.) Ker / Africa / South Africa / Western Cape / Overberg / Caledon / 16 / September / 1962 / Lewis G. J. / Lewis G. J. / National Botanic Gardens of South Africa, Kirstenbosch, Newlands, C.P. / BUC 350319
3. *Crococsmia* × *crococsmiiflora* (Lemoine) N.E.Br. / *Montbretia* / *crococsmiiflora* / Voss. / Europe / Romania / Muntenia / București / Botanical Garden „Dimitrie Brandza” / 10 / August / 1971 / Diaconescu V. / Diaconescu V. / BUC 183887 / *C. aurea* × *C. pottsii*
4. *Crococsmia* × *crococsmiiflora* (Lemoine) N.E.Br. / *Montbretia* / *crococsmiiflora* / Voss. / Europe / Romania / Muntenia / București / Botanical Garden „Dimitrie Brandza” / 10 / August / 1971 / Diaconescu V. / Diaconescu V. / BUC 183888 / *C. aurea* × *C. pottsii*
5. *Crococsmia* × *crococsmiiflora* (Lemoine) N.E.Br. / *Montbretia* / *crococsmiiflora* / Lemoine / Europe / Romania / Muntenia / București / Botanical Garden „Dimitrie Brandza” / 18 / August / 1964 / Diaconescu V. / Diaconescu V. / BUC 184101 / *C. aurea* × *C. pottsii*
6. *Crococsmia* × *crococsmiiflora* (Lemoine) N.E.Br. / *Montbretia* / *crococsmiiflora* / Lemoine / Europe / Romania / Muntenia / București / Botanical Garden „Dimitrie Brandza” / 4 / July / 1966 / unknown / unknown / BUC 350325 / *C. aurea* × *C. pottsii*
7. *Crococsmia* × *crococsmiiflora* (Lemoine) N.E.Br. / *Montbretia* / *crococsmiiflora* / Lemoine / Europe / Romania / Muntenia / București / Botanical Garden „Dimitrie Brandza” / 4 / July / 1966 / unknown / unknown / BUC 350326 / *C. aurea* × *C. pottsii*
8. *Crococsmia* × *crococsmiiflora* (Lemoine) N.E.Br. / *Montbretia* / *crococsmiiflora* / Lemoine / Europe / Romania / Muntenia / București / Botanical Garden „Dimitrie Brandza” / 4 / July / 1966 / unknown / unknown / BUC 350327 / *C. aurea* × *C. pottsii*
9. *Crococsmia* × *crococsmiiflora* (Lemoine) N.E.Br. / *Montbretia* / *crococsmiiflora* / Lemoine / Europe / Romania / Muntenia / București / Botanical Garden „Dimitrie Brandza” / 28 / June / 1966 / unknown / unknown / BUC 350366 / *C. aurea* × *C. pottsii*
10. *Crocus banaticus* J.Gay / *Crocus* / banaticus / Gay / Europe / Romania / Transilvania / Hunedoara / Săcărâmb / 21 / September / 1950 / Colgiu M. / Colgiu M. / BUC 176757
11. *Crocus banaticus* J.Gay / *Crocus* / banaticus / Europe / Romania / Transilvania / Alba / Călnic / through the young forest and glades / 9 / October / 1949 / Borza Al. / Borza Al. / BUC 281451
12. *Crocus banaticus* J.Gay / *Crocus* / banaticus / Europe / Romania / Transilvania / Alba / Călnic / through the young forest and glades / 9 / October / 1949 / Borza Al. / Borza Al. / BUC 281452
13. *Crocus banaticus* J.Gay / *Crocus* / banaticus / Europe / Romania / Transilvania / Alba / Călnic / through the young forest and glades / 9 / October / 1949 / Borza Al. / Borza Al. / BUC 281453
14. *Crocus banaticus* J.Gay / *Crocus* / banaticus / Europe / Romania / Transilvania / Alba / Călnic / through the young forest and glades / 9 / October / 1949 / Borza Al. / Borza Al. / BUC 281454

15. *Crocus banaticus* J.Gay / Crocus / banaticus / J.Gay / Europe / Romania / Muntenia / Prahova / Sinaia / Poiana Stânei, Munții Bucegi / 1965 / Nedelcu G. / Kerndorff H. / BUC 361233
16. *Crocus banaticus* J.Gay / Crocus / banaticus / Gay / Europe / Romania / Transilvania / Sălaj / Șimleu Silvaniei / in forest clearings and glades / Groza U. / Groza U. / BUC 375956
17. *Crocus banaticus* J.Gay / Crocus / banaticus / J. Gay / Europe / Romania / Oltenia / Mehedinți / Cireșu / Valea Pețimea / "44°48'59,00"N" / "22°33'26,80"E" / 437 m / in fagetum / 22 / September / 2013 / Negrean G. / Negrean G. / Herbarium G. Negrean / BUC 402475
18. *Crocus biflorus* Mill. / Crocus / biflorus / Miller / Europe / Romania / Muntenia / București / Botanical Garden „Dimitrie Brandza” / 9 / March / 2002 / Anastasiu P. / Anastasiu P. / BUC 363011
19. *Crocus biflorus* Mill. / Crocus / biflorus / Miller / Europe / Romania / Muntenia / București / Botanical Garden „Dimitrie Brandza” / 11 / March / 2004 / Anastasiu P. / Anastasiu P. / BUC 406270
20. *Crocus biflorus* Mill. / Crocus / biflorus / Miller / Europe / Greece / Eastern Macedonia and Thrace / Drama / Granitis / rocky slopes / 8 / February / 2004 / Anastasiu P. / Anastasiu P. / BUC 406271
21. *Crocus biflorus* Mill. / Crocus / biflorus / Miller / Europe / Romania / Dobrogea / Constanța / Hagieni / at the edge of the forest / 7 / March / 2004 / Anastasiu P. / Anastasiu P. / BUC 406272
22. *Crocus biflorus* Mill. / Crocus / biflorus / Miller / Europe / Romania / Dobrogea / Constanța / Hagieni / at the edge of the forest / 7 / March / 2004 / Anastasiu P. / Anastasiu P. / BUC 406273
23. *Crocus biflorus* Mill. / Crocus / biflorus / Miller / Europe / Romania / Dobrogea / Constanța / Hagieni / at the edge of the forest / 7 / March / 2004 / Anastasiu P. / Anastasiu P. / BUC 406274
24. *Crocus chrysanthus* (Herb.) Herb. / Crocus / chrysanthus / (Herb.) Herb. / Europe / Romania / Muntenia / București / Botanical Garden „Dimitrie Brandza” / 9 / March / 2002 / Anastasiu P. / Anastasiu P. / BUC 362970
25. *Crocus chrysanthus* (Herb.) Herb. / Crocus / chrysanthus / (Herb.) Herb. / Europe / Romania / Dobrogea / Constanța / Șipote / meadow / 10 / March / 2018 / Anastasiu P. / Anastasiu P. / BUC 408654
26. *Crocus chrysanthus* (Herb.) Herb. / Crocus / chrysanthus / (Herb.) Herb. / Europe / Romania / Dobrogea / Constanța / Viroaga / meadow / 10 / March / 2018 / Anastasiu P. / Anastasiu P. / BUC 408655
27. *Crocus chrysanthus* (Herb.) Herb. / Crocus / chrysanthus / (Herb.) Herb. / Europe / Romania / Dobrogea / Constanța / Șipote / Valea Șipote / meadow, towards Zorile / 10 / March / 2018 / Anastasiu P. / Anastasiu P. / BUC 408656
28. *Crocus chrysanthus* (Herb.) Herb. / Crocus / chrysanthus / (Herb.) Herb. / Europe / Romania / Dobrogea / Constanța / Cotu Văii / meadow / 10 / March / 2018 / Urziceanu M. / Urziceanu M. / BUC 408657
29. *Crocus chrysanthus* (Herb.) Herb. / Crocus / chrysanthus / (Herb.) Herb. / Europe / Romania / Dobrogea / Constanța / Șipote / meadow / 17 / February / 2018 / Anastasiu P. / Anastasiu P. / BUC 408658
30. *Crocus chrysanthus* (Herb.) Herb. / Crocus / chrysanthus / (Herb.) Herb. / Europe / Romania / Dobrogea / Constanța / Șipote / meadow / 17 / February / 2018 / Anastasiu P. / Anastasiu P. / BUC 408659

31. ***Crocus chrysanthus* (Herb.) Herb.** / *Crocus / chrysanthus / (Herb.) Herb.* / Europe / Romania / Dobrogea / Constanța / Șipote / meadow / 10 / March / 2018 / Anastasiu P. / Anastasiu P. / BUC 408662
32. ***Crocus chrysanthus* (Herb.) Herb.** / *Crocus / chrysanthus / (Herb.) Herb.* / Europe / Romania / Dobrogea / Constanța / Șipote / meadow / 10 / March / 2018 / Anastasiu P. / Anastasiu P. / BUC 408663
33. ***Crocus chrysanthus* (Herb.) Herb.** / *Crocus / chrysanthus / (Herb.) Herb.* / Europe / Romania / Dobrogea / Constanța / Șipote / meadow / 17 / February / 2018 / Anastasiu P. / Anastasiu P. / BUC 408664
34. ***Crocus chrysanthus* (Herb.) Herb.** / *Crocus / chrysanthus / (Herb.) Herb.* / Europe / Romania / Dobrogea / Constanța / Viroaga / meadow / 10 / March / 2018 / Anastasiu P. / Anastasiu P. / BUC 408665
35. ***Crocus chrysanthus* (Herb.) Herb.** / *Crocus / chrysanthus / (Herb.) Herb.* / Europe / Romania / Dobrogea / Constanța / Șipote / meadow / 10 / March / 2018 / Anastasiu P. / Anastasiu P. / BUC 408666
36. ***Crocus chrysanthus* (Herb.) Herb.** / *Crocus / chrysanthus / (Herb.) Herb.* / Europe / Romania / Dobrogea / Constanța / Șipote / Valea Șipote / meadow, towards Zorile / 10 / March / 2018 / Anastasiu P. / Anastasiu P. / BUC 408667
37. ***Crocus chrysanthus* (Herb.) Herb.** / *Crocus / chrysanthus / (Herb.) Herb.* / Europe / Romania / Dobrogea / Constanța / Cotu Văii / meadow / 10 / March / 2018 / Urziceanu M. / Anastasiu P. / BUC 408668
38. ***Crocus corsicus* Vanucchi** / *Crocus / corsicus / Vanucchi* / Europe / Romania / Muntenia / București / Botanical Garden „Dimitrie Brandza” / 80 m / February / 2004 / Anastasiu P. / Anastasiu P. / BUC 406265
39. ***Crocus corsicus* Vanucchi** / *Crocus / corsicus / Vanucchi* / Europe / Romania / Muntenia / București / Botanical Garden „Dimitrie Brandza” / 80 m / February / 2004 / Anastasiu P. / Anastasiu P. / BUC 406266
40. ***Crocus corsicus* Vanucchi** / *Crocus / corsicus / Vanucchi* / Europe / Romania / Muntenia / București / Botanical Garden „Dimitrie Brandza” / 11 / March / 2004 / Anastasiu P. / Anastasiu P. / BUC 406267
41. ***Crocus danubensis* Kernd., Pasche, Randjel. & V.Randjel.** / *Crocus / danubensis / Kernd., Pasche, Randjel. & V.Randjel.* / Europe / Romania / Muntenia / Călărași / Fundeni / Pădurea Zoicarui / 70 m / in forest glades, abundant / 13 / March / 1966 / Negrean G. / Anastasiu P. / BUC 171731
42. ***Crocus danubensis* Kernd., Pasche, Randjel. & V.Randjel.** / *Crocus / danubensis / Kernd., Pasche, Randjel. & V.Randjel.* / Europe / Romania / Moldova / Iași / Pădurea Mârzești / 165 m / in herbosis / 14 / March / 1937 / Burduja C. et Răvăruiț M. / Anastasiu P. / Flora Romaniae Exsiccata a Museo Botanico Universitatis Clusienensis (In Timișoara) Edita / BUC 181997
43. ***Crocus danubensis* Kernd., Pasche, Randjel. & V.Randjel.** / *Crocus / danubensis / Kernd., Pasche, Randjel. & V.Randjel.* / Europe / Moldova / Basarabia / Lăpușna / Durlăști / 70 m / in foenatis / 19 / March / 1937 / Bujorean G. / Anastasiu P. / Flora Romaniae Exsiccata a Museo Botanico Universitatis Clusienensis (In Timișoara) Edita / BUC 181998
44. ***Crocus danubensis* Kernd., Pasche, Randjel. & V.Randjel.** / *Crocus / danubensis / Kernd., Pasche, Randjel. & V.Randjel.* / Europe / Romania / Moldova / Iași / Pădurea Mârzești / 165 m / in herbosis / 14 / March / 1937 / Burduja C. et Răvăruiț M. / Anastasiu P. / Flora Romaniae Exsiccata a Museo Botanico Universitatis Clusienensis (In Timișoara) Edita / BUC 281457

45. *Crocus danubensis* Kernd., Pasche, Randjel. & V.Randjel. / *Crocus* / *danubensis* / Kernd., Pasche, Randjel. & V.Randjel. / Europe / Moldova / Basarabia / Lăpușna / Durlești / 70 m / in foenatis / 19 / March / 1937 / Bujorean G. / Anastasiu P. / Flora Romaniae Exsiccata a Museo Botanico Universitatis Clusienensis (In Timișoara) Edita / BUC 281458
46. *Crocus danubensis* Kernd., Pasche, Randjel. & V.Randjel. / *Crocus* / *danubensis* / Kernd., Pasche, Randjel. & V.Randjel. / Europe / Romania / Dobrogea / Constanța / Adamclisi / dry grassland / 5 / April / 2003 / Anastasiu P. / Anastasiu P. / BUC 364774
47. *Crocus danubensis* Kernd., Pasche, Randjel. & V.Randjel. / *Crocus* / *danubensis* / Kernd., Pasche, Randjel. & V.Randjel. / Europe / Romania / Dobrogea / Constanța / Șipote / meadow / 10 / March / 2018 / Anastasiu P. / Anastasiu P. / BUC 408660
48. *Crocus danubensis* Kernd., Pasche, Randjel. & V.Randjel. / *Crocus* / *danubensis* / Kernd., Pasche, Randjel. & V.Randjel. / Europe / Romania / Dobrogea / Constanța / Șipote / Valea Șipote / meadow, towards Zorile / 10 / March / 2018 / Anastasiu P. / Anastasiu P. / BUC 408661
49. *Crocus flavus* subsp. *flavus* / *Crocus* / *moesiacus* / Ker. Gawl. / Europe / Romania / Muntenia / Giurgiu / Săbăreni / 70 m / black locust forest / 15 / March / 1948 / Forstner S. / Forstner S. / BUC 170253
50. *Crocus flavus* subsp. *flavus* / *Crocus* / *aureus* / Sibth. et Sm. / Europe / Romania / Muntenia / Ilfov / Otopeni / Pădurea Tunari / 76 m / 20 / March / 1922 / Grințescu G. P. / Grințescu G. P. / Flora Romaniae Exsiccata a Horto et Museo Botanico Universitatis Clujensis Edita / BUC 182006
51. *Crocus flavus* subsp. *flavus* / *Crocus* / *moesiacus* / Ker. Gawl. / Europe / Romania / Muntenia / București / Botanical Garden „Dimitrie Brandza” / 17 / March / 1965 / Mihăilescu S. / Mihăilescu S. / BUC 183994
52. *Crocus flavus* subsp. *flavus* / *Crocus* / *moesiacus* / Ker. Gawl. / Europe / Romania / Muntenia / București / Botanical Garden „Dimitrie Brandza” / 28 / February / 1966 / Mihăilescu S. / Mihăilescu S. / BUC 183995
53. *Crocus flavus* subsp. *flavus* / *Crocus* / *moesiacus* / Ker. Gawl. / Europe / Romania / Muntenia / București / Botanical Garden „Dimitrie Brandza” / 5 / March / 1975 / Mihăilescu S. / Mihăilescu S. / BUC 184007
54. *Crocus flavus* subsp. *flavus* / *Crocus* / *moesiacus* / Ker. Gawl. / Europe / Romania / Muntenia / București / Botanical Garden „Dimitrie Brandza” / 5 / March / 1975 / Mihăilescu S. / Mihăilescu S. / BUC 184008
55. *Crocus flavus* subsp. *flavus* / *Crocus* / *moesiacus* / Ker. Gawl. / Europe / Romania / Muntenia / București / Botanical Garden „Dimitrie Brandza” / 5 / March / 1975 / Mihăilescu S. / Mihăilescu S. / BUC 184009
56. *Crocus flavus* subsp. *flavus* / *Crocus* / *aureus* / Sibth. et Sm. / Europe / Romania / Muntenia / București / Pădurea Băneasa / unknown / unknown / BUC 281448
57. *Crocus flavus* subsp. *flavus* / *Crocus* / *aureus* / Sibth. et Sm. / Europe / Romania / Muntenia / București / Pădurea Băneasa / unknown / unknown / BUC 281449
58. *Crocus flavus* subsp. *flavus* / *Crocus* / *aureus* / Sibth. et Sm. / Europe / Romania / Muntenia / București / Pădurea Băneasa / unknown / unknown / BUC 281450
59. *Crocus flavus* subsp. *flavus* / *Crocus* / *moesiacus* / Ker. Gawl. / Europe / Romania / Muntenia / Ilfov / Chitila / Pădurea Râioasa / 90 m / in plantationibus Robiniae pseudoacaciae / 20 / April / 1942 / Morariu I. / Morariu I. / Flora Romaniae Exsiccata a Museo Botanico Universitatis Clusienensis (In Timișoara) Edita / BUC 281460
60. *Crocus flavus* subsp. *flavus* / *Crocus* / *moesiacus* / Ker. Gawl. / Europe / Romania / Muntenia / Ilfov / Chitila / Pădurea Râioasa / 90 m / in plantationibus Robiniae

- pseudoacaciae / 20 / April / 1942 / Morariu I. / Morariu I. / Flora Romaniae Exsiccata a Museo Botanico Universitatis Clusienensis (In Timișoara) Edita / BUC 281461
61. *Crocus flavus subsp. flavus* / *Crocus* / moesiacus / Ker. Gawl. / Europe / Romania / Muntenia / Ilfov / Chitila / Pădurea Râioasa / 90 m / in plantationibus Robiniae pseudoacaciae / 20 / April / 1942 / Morariu I. / Morariu I. / Flora Romaniae Exsiccata a Museo Botanico Universitatis Clusienensis (In Timișoara) Edita / BUC 281462
62. *Crocus flavus subsp. flavus* / *Crocus* / moesiacus / Ker. Gawl. / Europe / Romania / Muntenia / Ilfov / Pădurea Știrbei Vodă / 79 m / 26 / March / 1937 / Forstner S. / Forstner S. / Flora Romaniae Exsiccata a Museo Botanico Universitatis Clusienensis (In Timișoara) Edita / BUC 281463
63. *Crocus flavus subsp. flavus* / *Crocus* / moesiacus / Ker. Gawl. / Europe / Romania / Muntenia / Teleorman / Râioasa / in meadows and forests / April / 1972 / Simion D. / Simion D. / BUC 285616
64. *Crocus flavus subsp. flavus* / *Crocus* / aureus / Europe / Romania / Muntenia / București / Parcul Cișmigiu / 1938 / Rebhuhn D. / Rebhuhn D. / BUC 319774
65. *Crocus flavus subsp. flavus* / *Crocus* / moesiacus / Ker. Gawl. / Europe / Romania / Muntenia / București / April / 1979 / unknown / unknown / BUC 319961
66. *Crocus flavus subsp. flavus* / *Crocus* / moesiacus / Ker. Gawl. / Europe / Romania / Muntenia / București / Botanical Garden „Dimitrie Brandza” / 5 / March / 1975 / Mihăilescu S. / Mihăilescu S. / BUC 350038
67. *Crocus flavus subsp. flavus* / *Crocus* / moesiacus / Ker. Gawl. / Europe / Romania / Muntenia / Giurgiu / Comana / Parcul Natural Comana / 15 / March / 1961 / Paucă A. et Andrei M. / Paucă A. et Andrei M. / BUC 362903
68. *Crocus flavus Weston* / *Crocus* / flavus / Weston / Europe / Romania / Muntenia / Giurgiu / Săbăreni / forest / 12 / March / 1961 / Andrei M. / Andrei M. / BUC 362904
69. *Crocus flavus Weston* / *Crocus* / flavus / Weston / Europe / Romania / Muntenia / Giurgiu / Săbăreni / forest / 12 / March / 1961 / Andrei M. / Andrei M. / BUC 362905
70. *Crocus flavus Weston* / *Crocus* / flavus / Weston / Europe / Romania / Muntenia / București / Botanical Garden „Dimitrie Brandza” / 15 / March / 2004 / Anastasiu P. / Anastasiu P. / BUC 406264
71. *Crocus flavus Weston* / *Crocus* / flavus / Weston / Europe / Romania / Muntenia / Ilfov / Buftea / Pădurea Râioasa / 7 / March / 2004 / Anastasiu P. / Anastasiu P. / BUC 406277
72. *Crocus flavus Weston* / *Crocus* / flavus / Weston / Europe / Romania / Muntenia / Ilfov / Buftea / Pădurea Râioasa / 7 / March / 2004 / Anastasiu P. / Anastasiu P. / BUC 406278
73. *Crocus flavus Weston* / *Crocus* / flavus / Weston / Europe / Romania / Muntenia / Ilfov / Buftea / Pădurea Râioasa / 7 / March / 2004 / Anastasiu P. / Anastasiu P. / BUC 406280
74. *Crocus flavus Weston* / *Crocus* / flavus / Weston / Europe / Romania / Muntenia / Ilfov / Buftea / Pădurea Râioasa / 7 / March / 2004 / Anastasiu P. / Anastasiu P. / BUC 406281
75. *Crocus flavus Weston* / *Crocus* / flavus / Weston / Europe / Romania / Muntenia / Ilfov / Buftea / Pădurea Râioasa / 7 / March / 2004 / Anastasiu P. / Anastasiu P. / BUC 406282
76. *Crocus flavus Weston* / *Crocus* / flavus / Weston / Europe / Romania / Muntenia / Ilfov / Buftea / Pădurea Râioasa / 7 / March / 2004 / Anastasiu P. / Anastasiu P. / BUC 406283

77. *Crocus flavus* **Weston** / *Crocus* / *flavus* / Weston / Europe / Romania / Muntenia / Ilfov / Buftea / Pădurea Râioasa / 7 / March / 2004 / Anastasiu P. / Anastasiu P. / BUC 406284
78. *Crocus flavus* **Weston** / *Crocus* / *flavus* / Weston / Europe / Romania / Muntenia / Ilfov / Buftea / Pădurea Râioasa / 7 / March / 2004 / Anastasiu P. / Anastasiu P. / BUC 406285
79. *Crocus flavus* **Weston** / *Crocus* / *flavus* / Weston / Europe / Romania / Muntenia / Ilfov / Buftea / Pădurea Râioasa / 7 / March / 2004 / Anastasiu P. / Anastasiu P. / BUC 406286
80. *Crocus flavus* **Weston** / *Crocus* / *flavus* / Weston / Europe / Romania / Muntenia / Ilfov / Buftea / Pădurea Râioasa / 7 / March / 2004 / Anastasiu P. / Anastasiu P. / BUC 406287
81. *Crocus flavus* **Weston** / *Crocus* / *flavus* / Weston / Europe / Romania / Muntenia / Ilfov / Buftea / Pădurea Râioasa / 7 / March / 2004 / Anastasiu P. / Anastasiu P. / BUC 406288
82. *Crocus flavus* **Weston** / *Crocus* / *flavus* / Weston / Europe / Romania / Muntenia / Ilfov / Buftea / Pădurea Râioasa / black locust plantation / 29 / February / 2004 / Anastasiu P. / Anastasiu P. / BUC 406289
83. *Crocus flavus* **Weston** / *Crocus* / *flavus* / Weston / Europe / Romania / Muntenia / Ilfov / Buftea / Pădurea Râioasa / black locust plantation / 29 / February / 2004 / Anastasiu P. / Anastasiu P. / BUC 406290
84. *Crocus flavus* **Weston** / *Crocus* / *flavus* / Weston / Europe / Romania / Muntenia / Ilfov / Buftea / Pădurea Râioasa / black locust plantation / 29 / February / 2004 / Anastasiu P. / Anastasiu P. / BUC 406291
85. *Crocus flavus* **Weston** / *Crocus* / *flavus* / Weston / Europe / Romania / Muntenia / Ilfov / Buftea / Pădurea Râioasa / black locust plantation / 29 / February / 2004 / Anastasiu P. / Anastasiu P. / BUC 406292
86. *Crocus flavus* **Weston** / *Crocus* / *flavus* / Weston / Europe / Romania / Muntenia / Ilfov / Buftea / Pădurea Râioasa / black locust plantation / 29 / February / 2004 / Anastasiu P. / Anastasiu P. / BUC 406293
87. *Crocus flavus* **Weston** / *Crocus* / *flavus* / Weston / Europe / Romania / Muntenia / Giurgiu / Pietrele / 4 / May / 2003 / Ilie M. / Ilie M. / BUC 411285
88. *Crocus heuffelianus* **Herb.** / *Crocus* / *heuffelianus* / Herb. / Europe / Romania / Muntenia / Prahova / Piatra arsă, Munții Bucegi / 29 / June / 1954 / Forstner S. / Forstner S. / BUC 170403
89. *Crocus heuffelianus* **Herb.** / *Crocus* / *heuffelianus* / Herb. / Europe / Romania / Muntenia / Prahova / Sinaia / Poiana Stâniei, Munții Bucegi / May / 1933 / Cretzoiu P. / Cretzoiu P. / BUC 175327
90. *Crocus heuffelianus* **Herb.** / *Crocus* / *heuffelianus* / Herb. / Europe / Romania / Transilvania / Brașov / Vârful Cristianul Mare / 10 / May / 1963 / Mitroiu N. / Mitroiu N. / BUC 176261
91. *Crocus heuffelianus* **Herb.** / *Crocus* / *heuffelianus* / Herb. / Europe / Romania / Transilvania / Cluj / Ciucea / Valea Poicului / 508 m / in pratis humidis / 18 / March / 1923 / Borza Al., Grințescu I., Nyárady E. I. et Gürler C. / Borza Al., Grințescu I., Nyárady E. I. et Gürler C. / Flora Romaniae Exsiccata a Horto et Museo Botanico Universitatis Clujensis Edita / BUC 181994
92. *Crocus heuffelianus* **Herb.** / *Crocus* / *heuffelianus* / Herb. / Europe / Romania / Transilvania / Mureș / Lăpușna / Poiana Meștera / 1120 m / in pratis humidis, valle superiore fluvii Gurghiu / 5 / April / 1923 / Nyárady E. I. / Nyárady E. I. / Flora

- Romaniae Exsiccata a Horto et Museo Botanico Universitatis Clujensis Edita / BUC 181995
93. *Crocus heuffelianus* **Herb.** / *Crocus* / heuffelianus / Herb. / Europe / Romania / Transilvania / Cluj / Ciucea / in campis et in fructicetis / 2 / April / 1908 / unknown / unknown / Flora Romaniae Exsiccata a Horto et Museo Botanico Universitatis Clujensis Edita / BUC 182003
 94. *Crocus heuffelianus* **Herb.** / *Crocus* / heuffelianus / Herb. / Europe / Romania / Bucovina / Suceava / Bosanci / 9 / April / 1922 / Bujorean G. / Bujorean G. / Flora Romaniae Exsiccata a Horto et Museo Botanico Universitatis Clujensis Edita / BUC 182004
 95. *Crocus heuffelianus* **Herb.** / *Crocus* / heuffelianus / Herb. / Europe / Romania / 23 / March / 1944 / Guşuleac M. / Guşuleac M. / BUC 184001
 96. *Crocus heuffelianus* **Herb.** / *Crocus* / heuffelianus / Herb. / Europe / Romania / Muntenia / Prahova / Sinaia / Poiana Stânei, Munţii Bucegi / May / 1958 / Petria E. / Petria E. / BUC 281446
 97. *Crocus heuffelianus* **Herb.** / *Crocus* / heuffelianus / Herb. / Europe / Romania / Muntenia / Prahova / Sinaia / Poiana Stânei, Munţii Bucegi / May / 1958 / Petria E. / Petria E. / BUC 281447
 98. *Crocus heuffelianus* **Herb.** / *Crocus* / heuffelianus / Herb. / Europe / Romania / Muntenia / Prahova / Sinaia / Poiana Stânei, Munţii Bucegi / Nedelcu G. / Nedelcu G. / BUC 284287
 99. *Crocus heuffelianus* **Herb.** / *Crocus* / heuffelianus / Herb. / Europe / Romania / Muntenia / Prahova / Sinaia / Poiana Stânei, Munţii Bucegi / Nedelcu G. / Nedelcu G. / BUC 284288
 100. *Crocus heuffelianus* **Herb.** / *Crocus* / heuffelianus / Herb. / Europe / Romania / Muntenia / Prahova / Sinaia / Poiana Stânei, Munţii Bucegi / Nedelcu G. / Nedelcu G. / BUC 284289
 101. *Crocus heuffelianus* **Herb.** / *Crocus* / heuffelianus / Herb. / Europe / Romania / Muntenia / Prahova / Sinaia / Poiana Stânei, Munţii Bucegi / Nedelcu G. / Nedelcu G. / BUC 284290
 102. *Crocus heuffelianus* **Herb.** / *Crocus* / heuffelianus / Herb. / Europe / Romania / Muntenia / Dâmboviţa / Şuţa Seacă / 300 m / 7 / March / Burtescu I. / Anastasiu P. / BUC 316327
 103. *Crocus heuffelianus* **Herb.** / *Crocus* / heuffelianus / Herb. / Europe / Romania / Moldova / Iaşi / Zbereni / 380 m / in silva et solo brunneo-cineraceo / 5 / April / 1973 / Dobrescu C. et Turcu I. / Dobrescu C. et Turcu I. / Flora Moldaviae et Dobrogeae Exsiccata a Horto Botanico Universitatis „Al. I. Cuza” Iassiensis Editam / BUC 319981
 104. *Crocus heuffelianus* **Herb.** / *Crocus* / heuffelianus / Herb. / Europe / Romania / Moldova / Iaşi / Zbereni / 380 m / in silva et solo brunneo-cineraceo / 5 / April / 1973 / Dobrescu C. et Turcu I. / Dobrescu C. et Turcu I. / Flora Moldaviae et Dobrogeae Exsiccata a Horto Botanico Universitatis „Al. I. Cuza” Iassiensis Editam / BUC 319982
 105. *Crocus heuffelianus* **Herb.** / *Crocus* / heuffelianus / Herb. / Europe / Romania / Moldova / Iaşi / Zbereni / 380 m / in silva et solo brunneo-cineraceo / 5 / April / 1973 / Dobrescu C. et Turcu I. / Dobrescu C. et Turcu I. / Flora Moldaviae et Dobrogeae Exsiccata a Horto Botanico Universitatis „Al. I. Cuza” Iassiensis Editam / BUC 319983

106. *Crocus heuffelianus* **Herb.** / *Crocus* / heuffelianus / Herb. / Europe / Romania / Muntenia / Argeş / Câmpulung Muscel / forest / 1 / May / 2003 / Dumbrăveanu C. / Anastasiu P. / BUC 364833
107. *Crocus heuffelianus* **Herb.** / *Crocus* / heuffelianus / Herb. / Europe / Romania / Muntenia / Prahova / Poiana Coştilei, Munţii Bucegi / 1000 m / meadow / 1 / May / 2003 / Ghiţulescu I. / Anastasiu P. / BUC 364834
108. *Crocus heuffelianus* **Herb.** / *Crocus* / heuffelianus / Herb. / Europe / Romania / Moldova / Neamţ / Piatra Neamţ / 1 / May / 2003 / Artenie N. / Anastasiu P. / BUC 364835
109. *Crocus heuffelianus* **Herb.** / *Crocus* / heuffelianus / Herb. / Europe / Romania / Transilvania / Braşov / Braşov / forest / 15 / April / 2003 / Gheorghe F. et Ilie M. / Anastasiu P. / BUC 364836
110. *Crocus heuffelianus* **Herb.** / *Crocus* / heuffelianus / Herb. / Europe / Romania / Moldova / Neamţ / Bistriţa / 1 / May / 2003 / Chelariu A. M. / Anastasiu P. / BUC 364837
111. *Crocus heuffelianus* **Herb.** / *Crocus* / heuffelianus / Herb. / Europe / Romania / Transilvania / Braşov / Zărneşti / glade at the edge of the forest / 26 / March / 2001 / Anastasiu P. / Anastasiu P. / BUC 364838
112. *Crocus heuffelianus* **Herb.** / *Crocus* / heuffelianus / Herb. / Europe / Romania / Muntenia / Prahova / Poiana Şarânga, Munţii Gârbova / 25 / March / 2001 / Negrean G. et Anastasiu P. / Anastasiu P. / Herbarium G. Negrean / BUC 364839
113. *Crocus heuffelianus* **Herb.** / *Crocus* / heuffelianus / Herb. / Europe / Romania / Transilvania / Braşov / Braşov / 20 / April / 1969 / Iordan T. / Iordan T. / BUC 374725
114. *Crocus heuffelianus* **Herb.** / *Crocus* / heuffelianus / Herb. / Europe / Romania / Transilvania / Sălaj / Şimleu Silvaniei / in pastures and glades / Groza U. / Anastasiu P. / BUC 375901
115. *Crocus heuffelianus* **Herb.** / *Crocus* / heuffelianus / Herb. / Europe / Romania / Oltenia / Mehedinţi / Cireşu / Podişul Mehedinţi / "44°50'07,62"N" / "22°33'03,20"E" / 416 m / in herbosis / 12 / June / 2011 / Negrean G. et Ciortan I. / Anastasiu P. / Herbarium G. Negrean / BUC 406053
116. *Crocus heuffelianus* **Herb.** / *Crocus* / heuffelianus / Herb. / Europe / Romania / Transilvania / Sălaj / Zalău / Munţii Meseş / "47°09'44,06"N" / "23°06'15,11"E" / 630 m / in fagetum / 2 / April / 2016 / Negrean G. / Anastasiu P. / Herbarium G. Negrean / BUC 406757
117. *Crocus korolkowii* **Maw & Regel** / *Crocus* / korolkowii / Maw et Regel / Europe / Romania / 23 / March / 1944 / Guşuleac M. / Guşuleac M. / BUC 184002
118. *Crocus korolkowii* **Maw & Regel** / *Crocus* / korolkowii / Maw et Regel / Europe / Romania / 23 / March / 1944 / Guşuleac M. / Guşuleac M. / BUC 184003
119. *Crocus korolkowii* **Maw & Regel** / *Crocus* / korolkowii / Maw et Regel / Europe / Romania / 23 / March / 1944 / Guşuleac M. / Guşuleac M. / BUC 184004
120. *Crocus olivieri* **J.Gay** / *Crocus* / olivieri / Gay / Europe / Romania / Muntenia / Bucureşti / Botanical Garden „Dimitrie Brandza” / 9 / March / 2002 / Anastasiu P. / Anastasiu P. / BUC 362921
121. *Crocus olivieri* **J.Gay** / *Crocus* / olivieri / J. Gay / Europe / Greece / Eastern Macedonia and Thrace / Drama / Granitis / rocky slopes / 8 / February / 2004 / Anastasiu P. / Anastasiu P. / BUC 406295
122. *Crocus olivieri* **J.Gay** / *Crocus* / olivieri / Gay / Europe / Romania / Muntenia / Bucureşti / Botanical Garden „Dimitrie Brandza” / 9 / March / 2002 / Anastasiu P. / Anastasiu P. / BUC 411286
123. *Crocus pallasii* **Goldb.** / *Crocus* / pallasii / M. B. / Europe / Romania / Dobrogea / Tulcea / Calfa / 70 m / in locis herbosis et saxosis / 26 / October / 1923 / Grinţescu G. P.

- / Grințescu G. P. / Flora Romaniae Exsiccata a Horto et Museo Botanico Universitatis Clujensis Edita / BUC 181996
124. *Crocus pallasii* **Goldb.** / *Crocus* / *pallasii* / M. B. / Europe / Romania / Muntenia / București / Botanical Garden „Dimitrie Brandza” / 1 / November / 1943 / unknown / unknown / BUC 184000
125. *Crocus pallasii* **Goldb.** / *Crocus* / *pallasii* / M. B. / Europe / Romania / Muntenia / București / Botanical Garden „Dimitrie Brandza” / 8 / October / 1976 / Mihăilescu S. / Mihăilescu S. / BUC 188261
126. *Crocus pallasii* **Goldb.** / *Crocus* / *pallasii* / M. B. / Europe / Romania / Dobrogea / Tulcea / Calfa / 70 m / in herbaceous and rocky areas / 26 / October / 1923 / Grințescu G. P. / Grințescu G. P. / Flora Romaniae Exsiccata a Horto et Museo Botanico Universitatis Clujensis Edita / BUC 269489
127. *Crocus pallasii* **Goldb.** / *Crocus* / *pallasii* / M. B. / Europe / Romania / Dobrogea / Tulcea / Calfa / 70 m / in herbaceous and rocky areas / 26 / October / 1923 / Grințescu G. P. / Grințescu G. P. / Flora Romaniae Exsiccata a Horto et Museo Botanico Universitatis Clujensis Edita / BUC 269490
128. *Crocus pallasii* **Goldb.** / *Crocus* / *pallasii* / M. B. / Europe / Romania / Muntenia / București / Botanical Garden „Dimitrie Brandza” / 10 / October / 1976 / Dănescu A. / Dănescu A. / BUC 312143
129. *Crocus pallasii* **Goldb.** / *Crocus* / *pallasii* / M. B. / Europe / Romania / Muntenia / București / Botanical Garden „Dimitrie Brandza” / 12 / October / 1974 / Mihăilescu S. / Mihăilescu S. / BUC 342098
130. *Crocus pallasii* **Goldb.** / *Crocus* / *pallasii* / M. B. / Europe / Romania / Muntenia / București / Botanical Garden „Dimitrie Brandza” / 12 / October / 1974 / Mihăilescu S. / Mihăilescu S. / BUC 342099
131. *Crocus variegatus* **Hoppe & Hornsch.** / *Crocus* / *variegatus* / Hoppe et Hornsch. / Europe / Romania / Muntenia / București / Botanical Garden „Dimitrie Brandza” / 5 / March / 1975 / Mihăilescu S. / Mihăilescu S. / BUC 184006
132. *Crocus variegatus* **Hoppe & Hornsch.** / *Crocus* / *variegatus* / Hoppe & Hornsch. / Europe / Romania / Muntenia / București / Botanical Garden „Dimitrie Brandza” / 1 / April / 1976 / Mihăilescu S. / Mihăilescu S. / BUC 186028
133. *Dietes iridioides* **subsp. iridioides** / Moraea / *iridioides* / Europe / Romania / Muntenia / București / Botanical Garden „Dimitrie Brandza” / 7 / March / 1973 / Diaconescu V. / Diaconescu V. / BUC 184870
134. *Dietes iridioides* **subsp. iridioides** / Moraea / *iridioides* / Europe / Romania / Muntenia / București / Botanical Garden „Dimitrie Brandza” / 28 / March / 1974 / Diaconescu V. / Diaconescu V. / BUC 363758
135. *Ferraria crispa* **Burm.** / *Ferraria* / *undulata* / L. / Africa / South Africa / Western Cape / West Coast / Piketberg / Munții Piketberg / 8 / September / 1965 / Barker W. F. / Lewis G. J. / National Botanic Gardens of South Africa, Kirstenbosch, Newlands, C.P. / BUC 350334
136. *Ferraria crispa* **Burm.** / *Ferraria* / *undulata* / L. / Africa / South Africa / Western Cape / West Coast / Piketberg / Munții Piketberg / 8 / September / 1965 / Barker W. F. / Lewis G. J. / National Botanic Gardens of South Africa, Kirstenbosch, Newlands, C.P. / BUC 350335
137. *Freesia* × *kewensis* **J.Wright bis** / *Freesia* / *hybrida* / Europe / Romania / Muntenia / Ilfov / Chitila / greenhouse / 9 / May / 1969 / illegible / illegible / BUC 281464 / *F. corymbosa* × *F. leichtlinii* **subsp. alba**.

138. *Freesia* × *kewensis* **J.Wright bis** / *Freesia* / hybrida / Europe / Romania / Muntenia / Ilfov / Chitila / greenhouse / 9 / May / 1969 / illegible / illegible / BUC 281465 / *F. corymbosa* × *F. leichtlinii* subsp. *alba*.
139. *Freesia refracta* (**Jacq.**) **Klatt** / *Freesia* / *refracta* / **Klatt** / Europe / Romania / 9 / March / 1951 / Gușuleac M. / Gușuleac M. / BUC 281467
140. *Freesia refracta* (**Jacq.**) **Klatt** / *Freesia* / *refracta* / **Klatt** / Europe / Romania / 9 / March / 1951 / Gușuleac M. / Gușuleac M. / BUC 281468
141. *Freesia refracta* (**Jacq.**) **Klatt** / *Freesia* / *refracta* / **Klatt** / Europe / Romania / 9 / March / 1951 / Gușuleac M. / Gușuleac M. / BUC 281469
142. *Freesia refracta* (**Jacq.**) **Klatt** / *Freesia* / *refracta* / **Klatt** / Europe / Romania / 9 / March / 1951 / Gușuleac M. / Gușuleac M. / BUC 281470
143. *Gladiolus* × *hybridus* **C.Morren** / *Gladiolus* / *hybridus* / Europe / Romania / Muntenia / București / Botanical Garden „Dimitrie Brandza” / 2 / September / 1958 / Diaconescu V. / Diaconescu V. / BUC 184012 / *G. cardinalis* × *G. gandavensis*
144. *Gladiolus communis* **L.** / *Gladiolus* / *communis* / Europe / Romania / Muntenia / Giurgiu / Câmpurelu / 25 / June / Radu I. / Radu I. / BUC 342868
145. *Gladiolus illyricus* **W.D.J.Koch** / *Gladiolus* / *illyricus* / Europe / Romania / Muntenia / București / Botanical Garden „Dimitrie Brandza” / 20 / May / 1966 / Mihăilescu S. / Mihăilescu S. / BUC 184010
146. *Gladiolus illyricus* **W.D.J.Koch** / *Gladiolus* / *illyricus* / Europe / Romania / Muntenia / București / Botanical Garden „Dimitrie Brandza” / 1 / June / 1965 / Mihăilescu S. / Mihăilescu S. / BUC 184011
147. *Gladiolus illyricus* **W.D.J.Koch** / *Gladiolus* / *illyricus* / **Koch** / Europe / Romania / Muntenia / București / Botanical Garden „Dimitrie Brandza” / 24 / May / 1966 / illegible / illegible / BUC 350322
148. *Gladiolus imbricatus* **L.** / *Gladiolus* / *imbricatus* / **L.** / Europe / Romania / Transilvania / Cluj / Valea Vadului / 30 / July / 1971 / Constantinescu M. / Constantinescu M. / BUC 14085
149. *Gladiolus imbricatus* **L.** / *Gladiolus* / *imbricatus* / **L.** / Europe / Romania / Muntenia / Giurgiu / Comana / Pădurea Comana / 70 m / wet pastures, near the Vlad Țepeș canton / 5 / July / 1949 / Forstner S. / Forstner S. / BUC 170254
150. *Gladiolus imbricatus* **L.** / *Gladiolus* / *hygrephilus* / **Beiss et Huet** / Asia / Iran / East Azerbaijan / Tabriz / Tabriz / 6000 ft / wet meadowland amongst grasses and rough herbage, 50 miles west of Tabriz / 13 / June / 1963 / unknown / unknown / Ex. Herb. Hort. Bot. Reg. Kew. / BUC 170532
151. *Gladiolus imbricatus* **L.** / *Gladiolus* / *imbricatus* / **L.** / Europe / Romania / Muntenia / Giurgiu / Comana / at the edge of the forest, near the canton / 26 / May / 1962 / Forstner S. / Forstner S. / BUC 171057
152. *Gladiolus imbricatus* **L.** / *Gladiolus* / *imbricatus* / **L.** / Europe / Romania / Muntenia / Giurgiu / Comana / at the edge of the forest, near the canton / 26 / May / 1962 / Forstner S. / Forstner S. / BUC 171058
153. *Gladiolus imbricatus* **L.** / *Gladiolus* / *imbricatus* / **L.** / Europe / Romania / Muntenia / Giurgiu / Comana / at the edge of the forest, near the canton / 26 / May / 1962 / Forstner S. / Forstner S. / BUC 171059
154. *Gladiolus imbricatus* **L.** / *Gladiolus* / *imbricatus* / **L.** / Europe / Romania / Muntenia / Giurgiu / Comana / at the edge of the forest, near the canton / 26 / May / 1962 / Forstner S. / Forstner S. / BUC 171060
155. *Gladiolus imbricatus* **L.** / *Gladiolus* / *imbricatus* / **L.** / Europe / Romania / Muntenia / Giurgiu / Comana / at the edge of the forest, near the canton / 26 / May / 1962 / Forstner S. / Forstner S. / BUC 171061

156. *Gladiolus imbricatus* L. / Gladiolus / imbricatus / L. / Europe / Romania / Bucovina / Suceava / Nedelcu G. / Nedelcu G. / BUC 176008
157. *Gladiolus imbricatus* L. / Gladiolus / imbricatus / L. / Europe / Romania / Oltenia / Gorj / Apa Neagră / 400 m / in pratis / 12 / June / 1961 / Buia Al., Păun M., Cîrțu D., Maloș C. et Olaru M. / Buia Al., Păun M., Cîrțu D., Maloș C. et Olaru M. / Flora Olteniae Exsiccata, Hortus Botanicus Institutii Agronomici „T. Vladimirescu” Craiova - Republica Socialista Romania / BUC 176655
158. *Gladiolus imbricatus* L. / Gladiolus / imbricatus / L. / Europe / Romania / Transilvania / Cluj / Dealul Feleacului / 22 / June / 1950 / Soran V. / Soran V. / BUC 176756
159. *Gladiolus imbricatus* L. / Gladiolus / imbricatus / L. / Europe / Romania / Maramureș / Maramureș / Rus / Lunca râului Sf. Maria / 23 / June / 1961 / Paucă A. / Morariu I. / BUC 182106
160. *Gladiolus imbricatus* L. / Gladiolus / imbricatus / L. / Europe / Romania / Transilvania / Cluj / Cluj-Napoca / Pădurea Făget / 650 m / in pratis / 13 / July / 1912 / unknown / unknown / Flora Romaniae Exsiccata a Museo Botanico Universitatis Clusienensis (In Timișoara) Edita / BUC 182924
161. *Gladiolus imbricatus* L. / Gladiolus / imbricatus / L. / Europe / Romania / Transilvania / Alba / Cetea / 300 m / in prato humido / 13 / June / 1947 / Borza Al. / Borza Al. / Flora Romaniae Exsiccata a Horto et Museo Botanico Universitatis Clujensis Edita / BUC 182926
162. *Gladiolus imbricatus* L. / Gladiolus / imbricatus / L. / Europe / Romania / Transilvania / Alba / Cetea / 300 m / in prato humido / 13 / June / 1947 / Borza Al. / Borza Al. / Flora Romaniae Exsiccata a Horto et Museo Botanico Universitatis Clujensis Edita / BUC 182927
163. *Gladiolus imbricatus* L. / Gladiolus / imbricatus / L. / Europe / Romania / Muntenia / București / Botanical Garden „Dimitrie Brandza” / 20 / May / 1967 / Diaconescu V. / Diaconescu V. / BUC 184013
164. *Gladiolus imbricatus* L. / Gladiolus / imbricatus / L. / Europe / Romania / Crișana / Bihor / Cornițel / 355 m / in wet meadow on the edge of a gently flowing valley on the floodplain of the Borozel, gleic alluvial soil / 15 / June / 1968 / Neacșu M. / Neacșu M. / BUC 249632
165. *Gladiolus imbricatus* L. / Gladiolus / imbricatus / L. / Europe / Romania / Muntenia / Dâmbovița / Gorgota / forest / 1 / July / 1980 / unknown / unknown / BUC 268671
166. *Gladiolus imbricatus* L. / Gladiolus / imbricatus / L. / Europe / Romania / Oltenia / Gorj / Apa Neagră / 400 m / in pratis / 12 / June / 1961 / Buia Al., Păun M., Cîrțu D., Maloș C. et Olaru M. / Buia Al., Păun M., Cîrțu D., Maloș C. et Olaru M. / Flora Olteniae Exsiccata, Hortus Botanicus Institutii Agronomici „T. Vladimirescu” Craiova - Republica Socialista Romania / BUC 273029
167. *Gladiolus imbricatus* L. / Gladiolus / imbricatus / L. / Europe / Romania / Muntenia / Argeș / Câmpulung Muscel / June / 1958 / Opreș T. / Opreș T. / BUC 274454
168. *Gladiolus imbricatus* L. / Gladiolus / imbricatus / L. / Europe / Romania / Transilvania / Cluj / Cluj-Napoca / Pădurea Făget / 650 m / in pratis / 13 / July / 1912 / unknown / unknown / Flora Romaniae Exsiccata a Museo Botanico Universitatis Clusienensis (In Timișoara) Edita / BUC 285235
169. *Gladiolus imbricatus* L. / Gladiolus / imbricatus / L. / Europe / Romania / Transilvania / Cluj / Cluj-Napoca / Pădurea Făget / 650 m / in pratis / 13 / July / 1912 / unknown / unknown / Flora Romaniae Exsiccata a Museo Botanico Universitatis Clusienensis (In Timișoara) Edita / BUC 285236
170. *Gladiolus imbricatus* L. / Gladiolus / imbricatus / L. / Europe / Romania / Transilvania / Cluj / Cluj-Napoca / Pădurea Făget / 650 m / in pratis / 13 / July / 1912 / unknown /

- unknown / Flora Romaniae Exsiccata a Museo Botanico Universitatis Clusienensis (In Timișoara) Edita / BUC 285237
171. *Gladiolus imbricatus* L. / Gladiolus / imbricatus / L. / Europe / Romania / Transilvania / Alba / Cetea / 300 m / in prato humido / 13 / June / 1947 / Borza Al. / Borza Al. / Flora Romaniae Exsiccata a Horto et Museo Botanico Universitatis Clujensis Edita / BUC 340275
172. *Gladiolus imbricatus* L. / Gladiolus / imbricatus / L. / Europe / Romania / Transilvania / Alba / Cetea / 300 m / in prato humido / 13 / June / 1947 / Borza Al. / Borza Al. / Flora Romaniae Exsiccata a Horto et Museo Botanico Universitatis Clujensis Edita / BUC 340276
173. *Gladiolus imbricatus* L. / Gladiolus / imbricatus / L. / Europe / Romania / Câmpulung / in meadows / 29 / July / 1950 / Morariu I. / Morariu I. / Herbarium I. Morariu / BUC 341764
174. *Gladiolus imbricatus* L. / Gladiolus / imbricatus / L. / Europe / Romania / Câmpulung / in meadows / 29 / July / 1950 / Morariu I. / Morariu I. / Herbarium I. Morariu / BUC 341765
175. *Gladiolus imbricatus* L. / Gladiolus / imbricatus / L. / Europe / Romania / Câmpulung / in meadows / 29 / July / 1950 / Morariu I. / Morariu I. / Herbarium I. Morariu / BUC 341766
176. *Gladiolus imbricatus* L. / Gladiolus / imbricatus / L. / Europe / Romania / Maramureș / Maramureș / Borșa / meadow / July / 1969 / Nedelcu G. / Nedelcu G. / BUC 343285
177. *Gladiolus imbricatus* L. / Gladiolus / imbricatus / L. / Europe / Romania / Maramureș / Maramureș / Borșa / meadow / July / 1969 / Nedelcu G. / Nedelcu G. / BUC 343286
178. *Gladiolus imbricatus* L. / Gladiolus / imbricatus / L. / Europe / Romania / Maramureș / Maramureș / Borșa / meadow / July / 1969 / Nedelcu G. / Nedelcu G. / BUC 343287
179. *Gladiolus imbricatus* L. / Gladiolus / imbricatus / L. / Europe / Romania / Maramureș / Maramureș / Borșa / meadow / July / 1969 / Nedelcu G. / Nedelcu G. / BUC 343288
180. *Gladiolus imbricatus* L. / Gladiolus / imbricatus / L. / Europe / Romania / Maramureș / Maramureș / Borșa / meadow / July / 1969 / Nedelcu G. / Nedelcu G. / BUC 343289
181. *Gladiolus imbricatus* L. / Gladiolus / imbricatus / L. / Europe / Romania / Maramureș / Maramureș / Borșa / meadow / July / 1969 / Nedelcu G. / Nedelcu G. / BUC 343290
182. *Gladiolus imbricatus* L. / Gladiolus / imbricatus / L. / Europe / Romania / Maramureș / Maramureș / Borșa / meadow / July / 1969 / Nedelcu G. / Nedelcu G. / BUC 343291
183. *Gladiolus imbricatus* L. / Gladiolus / imbricatus / L. / Europe / Romania / Maramureș / Maramureș / Borșa / meadow / July / 1969 / Nedelcu G. / Nedelcu G. / BUC 343292
184. *Gladiolus imbricatus* L. / Gladiolus / imbricatus / L. / Europe / Romania / Maramureș / Maramureș / Borșa / meadow / July / 1969 / Nedelcu G. / Nedelcu G. / BUC 343293
185. *Gladiolus imbricatus* L. / Gladiolus / imbricatus / L. / Europe / Romania / Maramureș / Maramureș / Borșa / meadow / July / 1969 / Nedelcu G. / Nedelcu G. / BUC 343294
186. *Gladiolus imbricatus* L. / Gladiolus / imbricatus / L. / Europe / Romania / Maramureș / Maramureș / Borșa / meadow / July / 1969 / Nedelcu G. / Nedelcu G. / BUC 343295
187. *Gladiolus imbricatus* L. / Gladiolus / imbricatus / L. / Europe / Romania / Muntenia / Buzău / Țintești / Pădurea Frasinu / 9 / June / 1946 / Morariu I. / Morariu I. / Herbarium I. Morariu / BUC 344790
188. *Gladiolus imbricatus* L. / Gladiolus / imbricatus / L. / Europe / Romania / Muntenia / Buzău / Țintești / Pădurea Frasinu / 9 / June / 1946 / Morariu I. / Morariu I. / Herbarium I. Morariu / BUC 344791
189. *Gladiolus imbricatus* L. / Gladiolus / imbricatus / L. / Europe / Romania / Muntenia / Buzău / Țintești / Pădurea Frasinu / 9 / June / 1946 / Morariu I. / Morariu I. / Herbarium I. Morariu / BUC 344792

190. *Gladiolus imbricatus* L. / Gladiolus / imbricatus / L. / Europe / Romania / Muntenia / Buzău / Țintești / Pădurea Frasinu / 9 / June / 1946 / Morariu I. / Morariu I. / Herbarium I. Morariu / BUC 344793
191. *Gladiolus imbricatus* L. / Gladiolus / imbricatus / L. / Europe / Romania / Muntenia / București / Botanical Garden „Dimitrie Brandza” / 20 / May / 1967 / Diaconescu V. / Diaconescu V. / BUC 350039
192. *Gladiolus imbricatus* L. / Gladiolus / imbricatus / L. / Europe / Romania / Muntenia / București / Botanical Garden „Dimitrie Brandza” / 20 / May / 1967 / Diaconescu V. / Diaconescu V. / BUC 350040
193. *Gladiolus imbricatus* L. / Gladiolus / imbricatus / L. / Europe / Romania / Crișana / Bihor / Cornițel / 355 m / in wet meadow on the edge of a gently flowing valley on the floodplain of the Borozel, gleic alluvial soil / 15 / June / 1968 / Neacșu M. / Neacșu M. / BUC 361464
194. *Gladiolus imbricatus* L. / Gladiolus / imbricatus / L. / Europe / Romania / Transilvania / Cluj / Valea Vadului / 30 / July / 1971 / Constantinescu M. / Constantinescu M. / BUC 363176
195. *Gladiolus imbricatus* L. / Gladiolus / imbricatus / L. / Europe / Romania / Bucovina / Suceava / Marginea / 50 m / 8 / July / 1985 / Lucescu T. / Lucescu T. / Flora Moldaviae et Dobrogeae Exsiccata a Horto Botanico Universitatis „Al. I. Cuza” Iassiensis Editam / BUC 373248
196. *Gladiolus imbricatus* L. / Gladiolus / imbricatus / L. / Europe / Romania / Oltenia / Mehedinți / Cireșu / Podișul Mehedinți / "44°49'53,68"N" / "22°33'06,80"E" / 372 m / in foenatis humidis / 21 / June / 2013 / Negrean G. / Negrean G. / Herbarium G. Negrean / BUC 402906
197. *Gladiolus imbricatus* L. / Gladiolus / imbricatus / L. / Europe / Romania / Transilvania / Sălaj / Bogdana / Munții Meseș / "47°02'35,86"N" / "22°56'46,98"E" / 791 m / ridge, very rich grasslands / 1 / July / 2015 / Negrean G. / Negrean G. / Herbarium G. Negrean / BUC 409589
198. *Gladiolus imbricatus* L. / Gladiolus / imbricatus / L. / Europe / Romania / Transilvania / Alba / Cetea / 300 m / wet meadow / 13 / June / 1947 / Borza Al. / Borza Al. / Flora Romaniae Exsiccata a Horto et Museo Botanico Universitatis Clujensis Edita / BUC 411664
199. *Gladiolus vandermerwei* (L.Bolus) Goldblatt & M.P.de Vos / Homoglossum / vandermerwei / (L.Bolus) L.Bolus / Africa / South Africa / Gauteng / Sedibeng / Heidelberg / 6 / September / 1963 / Lewis G. J. / Lewis G. J. / National Botanic Gardens of South Africa, Kirstenbosch, Newlands, C.P. / BUC 350372
200. *Iris × florentina* L. / Iris / florentina / L. / Europe / Romania / Muntenia / București / Botanical Garden „Dimitrie Brandza” / 19 / May / 1956 / unknown / unknown / BUC 267874
201. *Iris × florentina* L. / Iris / florentina / L. / Europe / Romania / Muntenia / București / Botanical Garden „Dimitrie Brandza” / 19 / May / 1956 / unknown / unknown / BUC 267875
202. *Iris × florentina* L. / Iris / florentina / L. / Europe / Romania / Muntenia / București / Botanical Garden „Dimitrie Brandza” / 19 / May / 1956 / unknown / unknown / BUC 267876
203. *Iris × germanica* L. / Iris / germanica / L. / Europe / Romania / Muntenia / București / Botanical Garden „Dimitrie Brandza” / 8 / May / 1961 / Mihăilescu S. / Camen-Comănescu P. / BUC 184026 / I. pallida × I. variegata

204. *Iris* × *germanica* L. / *Iris* / *germanica* / L. / Europe / Romania / Muntenia / București / Botanical Garden „Dimitrie Brandza” / 30 / May / 1964 / Mihăilescu S. / Mihăilescu S. / BUC 184033 / *I. pallida* × *I. variegata*
205. *Iris* × *germanica* L. / *Iris* / *germanica* / L. / Europe / Romania / Muntenia / București / Botanical Garden „Dimitrie Brandza” / 15 / May / 1956 / unknown / unknown / BUC 267877 / *I. pallida* × *I. variegata*
206. *Iris* × *germanica* L. / *Iris* / *germanica* / L. / Europe / Romania / Muntenia / București / Botanical Garden „Dimitrie Brandza” / 15 / May / 1956 / unknown / unknown / BUC 267878 / *I. pallida* × *I. variegata*
207. *Iris aphylla* L. / *Iris* / *aphylla* / L. / Europe / Romania / Transilvania / Cluj / Valea Elövölgy / 480 m / in *foenatis* / 14 / May / 1939 / Ghișa E. / Ghișa E. / Flora Romaniae Exsiccata a Museo Botanico Universitatis Clusienensis (In Timișoara) Edita / BUC 180680
208. *Iris aphylla* L. / *Iris* / *aphylla* / L. / Europe / Romania / Muntenia / București / Botanical Garden „Dimitrie Brandza” / 5 / May / 1961 / Diaconescu V. / Diaconescu V. / BUC 184015
209. *Iris aphylla* L. / *Iris* / *dacica* / Beldie / Europe / Romania / Muntenia / București / Botanical Garden „Dimitrie Brandza” / 22 / April / 1975 / Mihăilescu S. / Mihăilescu S. / BUC 184027
210. *Iris aphylla* L. / *Iris* / *dacica* / Beldie / Europe / Romania / Muntenia / București / Botanical Garden „Dimitrie Brandza” / 22 / April / 1975 / Mihăilescu S. / Mihăilescu S. / BUC 184028
211. *Iris aphylla* L. / *Iris* / *hungarica* / W. et K. / Europe / Romania / Muntenia / București / Botanical Garden „Dimitrie Brandza” / rare plants sector / 22 / April / 1975 / Mihăilescu S. / Mihăilescu S. / BUC 184031
212. *Iris aphylla* L. / *Iris* / *hungarica* / Kit / Europe / Romania / Muntenia / București / Botanical Garden „Dimitrie Brandza” / 9 / July / 1941 / Gușuleac M. / Gușuleac M. / BUC 184032
213. *Iris aphylla* L. / *Iris* / *hungarica* / W. et K. / *dacica* Beldie / Europe / Romania / Muntenia / București / Botanical Garden „Dimitrie Brandza” / 23 / May / 1974 / Mihăilescu S. / Mihăilescu S. / BUC 184296
214. *Iris aphylla* L. / *Iris* / *hungarica* / W. et K. / *dacica* Beldie / Europe / Romania / Muntenia / București / Botanical Garden „Dimitrie Brandza” / 23 / May / 1974 / Mihăilescu S. / Mihăilescu S. / BUC 184297
215. *Iris aphylla* L. / *Iris* / *aphylla* / (Waldst. & Kit.) Dostál / *hungarica* / Europe / Romania / Muntenia / Prahova / Vârful cu Dor, Munții Bucegi / 30 / May / 1947 / Beldie / Anastasiu P. / BUC 315763
216. *Iris aphylla* L. / *Iris* / *aphylla* / (Waldst. & Kit.) Dostál / *hungarica* / Europe / Romania / Muntenia / Prahova / Vârful cu Dor, Munții Bucegi / 30 / May / 1947 / Beldie / Anastasiu P. / BUC 315764
217. *Iris aphylla* L. / *Iris* / *dacica* / Beldie / Europe / Romania / Muntenia / București / Botanical Garden „Dimitrie Brandza” / 22 / June / 1975 / Mihăilescu S. / Mihăilescu S. / BUC 350041
218. *Iris dichotoma* Pall. / *Iris* / *dichotoma* / Pall. / Europe / Romania / Muntenia / București / Botanical Garden „Dimitrie Brandza” / 18 / September / 1945 / Gușuleac M. / Gușuleac M. / BUC 184029
219. *Iris dichotoma* Pall. / *Iris* / *dichotoma* / Pall. / Europe / Romania / 1 / September / 1947 / Gușuleac M. / Gușuleac M. / BUC 184030

220. *Iris dichotoma* Pall. / Iris / dichotoma / Pall. / Europe / Romania / Muntenia / București / Botanical Garden „Dimitrie Brandza” / 22 / July / 1950 / Gușuleac M. / Gușuleac M. / BUC 185743
221. *Iris dichotoma* Pall. / Iris / dichotoma / Pall. / Europe / Romania / Muntenia / București / Botanical Garden „Dimitrie Brandza” / 22 / July / 1950 / Gușuleac M. / Gușuleac M. / BUC 185744
222. *Iris dichotoma* Pall. / Iris / dichotoma / Pall. / Europe / Romania / Muntenia / București / Botanical Garden „Dimitrie Brandza” / 28 / July / 1950 / Gușuleac M. / Gușuleac M. / BUC 185745
223. *Iris dichotoma* Pall. / Iris / dichotoma / Pall. / Europe / Romania / Muntenia / București / Botanical Garden „Dimitrie Brandza” / 22 / July / 1950 / Gușuleac M. / Gușuleac M. / BUC 185746
224. *Iris domestica* (L.) Goldblatt & Mabb. / Belamcanda / chinensis / L. / Europe / Romania / Muntenia / București / Botanical Garden „Dimitrie Brandza” / 8 / August / 1972 / Diaconescu V. / Diaconescu V. / BUC 184314
225. *Iris domestica* (L.) Goldblatt & Mabb. / Belamcanda / chinensis / L. / Europe / Romania / Muntenia / București / Botanical Garden „Dimitrie Brandza” / 8 / August / 1972 / Diaconescu V. / Diaconescu V. / BUC 184315
226. *Iris domestica* (L.) Goldblatt & Mabb. / Belamcanda / chinensis / L. / Europe / Romania / Muntenia / București / Botanical Garden „Dimitrie Brandza” / 8 / August / 1972 / Diaconescu V. / Diaconescu V. / BUC 184316
227. *Iris ensata* Thunb. / Iris / ensata / Europe / Romania / Muntenia / București / Botanical Garden „Dimitrie Brandza” / 30 / April / 1957 / illegible / illegible / BUC 184068
228. *Iris ensata* Thunb. / Iris / ensata / Europe / Romania / Muntenia / București / Botanical Garden „Dimitrie Brandza” / 30 / April / 1957 / illegible / illegible / BUC 184069
229. *Iris graminea* L. / Iris / pseudocyperus / Schur / Europe / Romania / Transilvania / Cluj / Cluj-Napoca / 430 m / in fruticetis supra fontanam Sf. Ioan dictam / 22 / May / 1947 / Țopa E. et Codoreanu V. / Țopa E. et Codoreanu V. / Flora Romaniae Exsiccata a Horto et Museo Botanico Universitatis Clujensis Edita / BUC 180683
230. *Iris graminea* L. / Iris / graminea / L. / Europe / Romania / Muntenia / București / Botanical Garden „Dimitrie Brandza” / rare plants sector / 5 / May / 1970 / Mihăilescu S. / Mihăilescu S. / BUC 184037
231. *Iris graminea* L. / Iris / graminea / L. / Europe / Romania / Muntenia / București / Botanical Garden „Dimitrie Brandza” / alpine sector / 30 / April / 1957 / Ivan D. / Ivan D. / BUC 184038
232. *Iris graminea* L. / Iris / graminea / L. / Europe / Romania / Muntenia / București / Botanical Garden „Dimitrie Brandza” / alpine sector / 30 / April / 1957 / Ivan D. / Ivan D. / BUC 184039
233. *Iris graminea* L. / Iris / graminea / L. / Europe / Romania / 20 / August / 1947 / illegible / illegible / BUC 184040
234. *Iris graminea* L. / Iris / pseudocyperus / Schur / Europe / Romania / Transilvania / Cluj / Cluj-Napoca / Făgetul Clujului / 600 m / 22 / May / 1947 / Boscaiu N., Codoreanu V. et Țopa E. / Boscaiu N., Codoreanu V. et Țopa E. / BUC 285224
235. *Iris graminea* L. / Iris / pseudocyperus / Schur / Europe / Romania / Transilvania / Cluj / Cluj-Napoca / Făgetul Clujului / 600 m / 22 / May / 1947 / Boscaiu N., Codoreanu V. et Țopa E. / Boscaiu N., Codoreanu V. et Țopa E. / BUC 285225
236. *Iris graminea* L. / Iris / graminea / L. / pseudocyperus / Europe / Romania / Banat / Timiș / Banloc / pheasantry / 10 / May / 1948 / Borza Al. / Borza Al. / BUC 285228
237. *Iris graminea* L. / Iris / graminea / L. / pseudocyperus / Europe / Romania / Banat / Timiș / Banloc / pheasantry / 10 / May / 1948 / Borza Al. / Borza Al. / BUC 285229

238. *Iris graminea* L. / Iris / graminea / L. / pseudocyperus / Europe / Romania / Banat / Timiș / Banloc / pheasantry / 10 / May / 1948 / Borza Al. / Borza Al. / BUC 285230
239. *Iris graminea* L. / Iris / pseudocyperus / Schur / Europe / Romania / Bucovina / Suceava / Bosanci / Dealul Strimbu / in meadows / 8 / June / 1964 / Morariu I. / Morariu I. / Herbarium I. Morariu / BUC 339884
240. *Iris graminea* L. / Iris / pseudocyperus / Schur / Europe / Romania / Bucovina / Suceava / Bosanci / Dealul Strimbu / in meadows / 8 / June / 1964 / Morariu I. / Morariu I. / Herbarium I. Morariu / BUC 339885
241. *Iris graminea* L. / Iris / pseudocyperus / Schur / Europe / Romania / Transilvania / Cluj / Cluj-Napoca / 430 m / in fruticetis supra fontanam Sf. Ioan dictam / 22 / May / 1947 / Țopa E. et Codoreanu V. / Țopa E. et Codoreanu V. / Flora Romaniae Exsiccata a Horto et Museo Botanico Universitatis Clujensis Edita / BUC 340265
242. *Iris graminea* L. / Iris / pseudocyperus / Schur / Europe / Romania / Transilvania / Cluj / Cluj-Napoca / 430 m / in fruticetis supra fontanam Sf. Ioan dictam / 22 / May / 1947 / Țopa E. et Codoreanu V. / Țopa E. et Codoreanu V. / Flora Romaniae Exsiccata a Horto et Museo Botanico Universitatis Clujensis Edita / BUC 340266
243. *Iris halophila* Pall. / Iris / spuria / (Palla) Dykes / halophila / Asia / Iran / Golestan / Gordan / Gordan / 4000 ft / in marshy open ground, 5 miles west of Bufnard / 17 / June / 1960 / Syngé et Furse / Syngé et Furse / Ex. Herb. Hort. Bot. Reg. Kew. / BUC 170691
244. *Iris halophila* Pall. / Iris / spuria / (Palla) Dykes / halophila / Asia / Iran / West Azerbaijan / Khoi / Khoi / 4000 ft / in marshy ground, NE of Khoi / 22 / May / 1960 / Syngé et Furse / Syngé et Furse / Ex. Herb. Hort. Bot. Reg. Kew. / BUC 170692
245. *Iris halophila* Pall. / Iris / halophila / Pall. / Europe / Romania / Muntenia / București / Botanical Garden „Dimitrie Brandza” / 7 / June / 1976 / Mihăilescu S. / Mihăilescu S. / BUC 186719
246. *Iris halophila* Pall. / Iris / spuria / (Palla) Dykes / halophila / Asia / Iran / Golestan / Gordan / Gordan / 4000 ft / in marshy open ground, 5 miles west of Bufnard / 17 / June / 1960 / Syngé et Furse / Syngé et Furse / Ex. Herb. Hort. Bot. Reg. Kew. / BUC 208915
247. *Iris halophila* Pall. / Iris / halophila / Pall. / Europe / Romania / Muntenia / București / Botanical Garden „Dimitrie Brandza” / rare plants sector / 9 / June / 1980 / Mihăilescu S. / Mihăilescu S. / BUC 307213
248. *Iris iberica* Steven / Iris / iberica / Hoffm. / Asia / Turkey / Eastern Anatolia / Erzurum / Erzurum / 6000 ft / among grass and dry stony land of roadside, east of Erzurum / 21 / May / 1960 / Syngé et Furse / Syngé et Furse / Ex. Herb. Hort. Bot. Reg. Kew. / BUC 170693
249. *Iris imbricata* Lindl. / Iris / imbricata / Lindl. / Asia / Iran / Mazandaran / Chalus / Chalus / 6000 ft / north side above Vuliabad, on dry stony banks / 2 / June / 1960 / Syngé et Furse / Syngé et Furse / Ex. Herb. Hort. Bot. Reg. Kew. / BUC 170690
250. *Iris lactea* Pall. / Iris / lactea / Pall. / Europe / Romania / Muntenia / București / Botanical Garden „Dimitrie Brandza” / dobrogean hills sector / 11 / May / 1963 / Dănescu A. / Camen-Comănescu P. / BUC 184035
251. *Iris lactea* Pall. / Iris / lactea / Pall. / Europe / Romania / Muntenia / București / Botanical Garden „Dimitrie Brandza” / dobrogean hills sector / 5 / May / 1964 / Dănescu A. / Camen-Comănescu P. / BUC 184036
252. *Iris latifolia* (Mill.) Voss / Iris / xiphioides / Europe / Romania / unknown / unknown / BUC 184072

253. *Iris orientalis* Mill. / Iris / monnieri / Europe / Romania / Muntenia / București / Botanical Garden „Dimitrie Brandza” / 7 / June / 1963 / Mihăilescu S. / Mihăilescu S. / BUC 184042
254. *Iris pontica* Zapal. / Iris / humilis / Europe / Romania / Muntenia / București / Botanical Garden „Dimitrie Brandza” / 23 / May / 1974 / Mihăilescu S. / Mihăilescu S. / BUC 184294
255. *Iris pseudacorus* L. / Iris / pseudacorus / L. / Europe / Romania / Oltenia / Dolj / Cernele / 80 m / in paludosis / 9 / May / 1963 / Buia Al. / Buia Al. / Flora Olteniae Exsiccata, Hortus Botanicus Institutii Agronomici „T. Vladimirescu” Craiova - Republica Socialista Romania / BUC 176654
256. *Iris pseudacorus* L. / Iris / pseudacorus / L. / Europe / Romania / Banat / Timiș / Chevereșul Mare / 100 m / in aquis stagnantibus ad viam Chevereșul Mare / 10 / May / 1941 / Borza Al. / Borza Al. / Flora Romaniae Exsiccata a Museo Botanico Universitatis Clusienensis (In Timișoara) Edita / BUC 180682
257. *Iris pseudacorus* L. / Iris / pseudacorus / L. / Europe / Romania / 9 / May / 1968 / Diaconescu V. / Diaconescu V. / BUC 184050
258. *Iris pseudacorus* L. / Iris / pseudacorus / L. / Europe / Romania / Muntenia / București / Botanical Garden „Dimitrie Brandza” / 13 / May / 1963 / Mihăilescu S. / Mihăilescu S. / BUC 184051
259. *Iris pseudacorus* L. / Iris / pseudacorus / L. / Europe / Romania / Muntenia / București / Botanical Garden „Dimitrie Brandza” / 28 / August / 1947 / Gușuleac M. / Gușuleac M. / BUC 184052
260. *Iris pseudacorus* L. / Iris / pseudacorus / L. / Europe / Romania / Muntenia / București / Botanical Garden „Dimitrie Brandza” / 28 / August / 1947 / Gușuleac M. / Gușuleac M. / BUC 184053
261. *Iris pseudacorus* L. / Iris / pseudacorus / L. / Europe / Romania / Muntenia / București / Botanical Garden „Dimitrie Brandza” / 28 / August / 1947 / Gușuleac M. / Gușuleac M. / BUC 184054
262. *Iris pseudacorus* L. / Iris / pseudacorus / L. / Europe / Romania / Muntenia / București / Botanical Garden „Dimitrie Brandza” / italian garden sector / 23 / May / 1969 / unknown / unknown / BUC 184055
263. *Iris pseudacorus* L. / Iris / pseudacorus / L. / Europe / Romania / Muntenia / București / Botanical Garden „Dimitrie Brandza” / italian garden sector / 23 / May / 1969 / unknown / unknown / BUC 184056
264. *Iris pseudacorus* L. / Iris / pseudacorus / L. / Europe / Romania / Muntenia / București / Botanical Garden „Dimitrie Brandza” / italian garden sector / 23 / May / 1969 / unknown / unknown / BUC 184057
265. *Iris pseudacorus* L. / Iris / pseudacorus / L. / Europe / Romania / Muntenia / București / Botanical Garden „Dimitrie Brandza” / italian garden sector / 23 / May / 1969 / unknown / unknown / BUC 184058
266. *Iris pseudacorus* L. / Iris / pseudacorus / L. / Europe / Romania / Muntenia / București / Botanical Garden „Dimitrie Brandza” / italian garden sector / 23 / May / 1969 / unknown / unknown / BUC 184059
267. *Iris pseudacorus* L. / Iris / pseudacorus / L. / Europe / Romania / Crișana / Bihor / Șuncuiuș / Valea Drostelec / 300 m / wet meadow / 18 / May / 1967 / Neașu M. / Neașu M. / BUC 249631
268. *Iris pseudacorus* L. / Iris / pseudacorus / L. / Europe / Romania / Muntenia / Dâmbovița / Potlogi / 140 m / riparian zone / May / 1981 / Bratcovici A. / Bratcovici A. / BUC 271228

269. *Iris pseudacorus* L. / Iris / pseudacorus / L. / Europe / Romania / Oltenia / Dolj / Cernele / 80 m / in paludosis / 9 / May / 1963 / Buia Al. / Buia Al. / Flora Olteniae Exsiccata, Hortus Botanicus Institutii Agronomici „T. Vladimirescu” Craiova - Republica Socialista Romania / BUC 273030
270. *Iris pseudacorus* L. / Iris / pseudacorus / L. / Europe / Romania / Muntenia / Râul Sabar / 20 / June / Radu I. / Radu I. / BUC 274488
271. *Iris pseudacorus* L. / Iris / pseudacorus / L. / Europe / Romania / Muntenia / București / Botanical Garden „Dimitrie Brandza” / 15 / May / 1956 / unknown / unknown / BUC 284951
272. *Iris pseudacorus* L. / Iris / pseudacorus / L. / Europe / Romania / Muntenia / București / Băneasa / unknown / unknown / BUC 285226
273. *Iris pseudacorus* L. / Iris / pseudacorus / L. / Europe / Romania / Muntenia / București / Băneasa / unknown / unknown / BUC 285227
274. *Iris pseudacorus* L. / Iris / pseudacorus / L. / Europe / Romania / Dobrogea / Tulcea / Mila 23 / 28 / August / 1971 / unknown / unknown / BUC 315762
275. *Iris pseudacorus* L. / Iris / pseudacorus / L. / Europe / Romania / in ponds towards Fântâna Rece / 19 / May / 1961 / Morariu I. / Morariu I. / Faculty of Silviculture Herbarium / BUC 339645
276. *Iris pseudacorus* L. / Iris / pseudacorus / L. / Europe / Romania / Muntenia / Ilfov / Lacul Snagov / Iacoboaie M. / Iacoboaie M. / BUC 361484
277. *Iris pseudacorus* L. / Iris / pseudacorus / L. / Europe / Romania / Oltenia / Vâlcea / Lădești / wet meadow / Becheru E. / Becheru E. / BUC 363043
278. *Iris pseudacorus* L. / Iris / pseudacorus / L. / Europe / Romania / Muntenia / București / Botanical Garden „Dimitrie Brandza” / medicinal plants sector / 12 / June / 1995 / Velea A. / Anastasiu P. / BUC 373615
279. *Iris pseudacorus* L. / Iris / pseudacorus / L. / Europe / Romania / Banat / Caraș-Severin / Pojejena / 20 / June / 1974 / Mihai M. / Mihai M. / BUC 411289
280. *Iris pumila* L. / Iris / pumila / L. / Europe / Romania / Muntenia / București / Botanical Garden „Dimitrie Brandza” / 29 / March / 1961 / Mihăilescu S. / Mihăilescu S. / BUC 184043
281. *Iris pumila* L. / Iris / pumila / L. / Europe / Romania / Muntenia / București / Botanical Garden „Dimitrie Brandza” / 29 / March / 1961 / Mihăilescu S. / Mihăilescu S. / BUC 184044
282. *Iris pumila* L. / Iris / pumila / L. / Europe / Romania / Muntenia / București / Botanical Garden „Dimitrie Brandza” / 29 / March / 1961 / Mihăilescu S. / Mihăilescu S. / BUC 184045
283. *Iris pumila* L. / Iris / pumila / L. / Europe / Romania / Muntenia / București / Botanical Garden „Dimitrie Brandza” / 29 / April / 1969 / Dănescu A. / Dănescu A. / BUC 184047
284. *Iris pumila* L. / Iris / pumila / L. / Europe / Romania / Muntenia / București / Botanical Garden „Dimitrie Brandza” / 29 / April / 1969 / Dănescu A. / Dănescu A. / BUC 184048
285. *Iris pumila* L. / Iris / pumila / L. / Europe / Romania / Muntenia / București / Botanical Garden „Dimitrie Brandza” / 29 / April / 1969 / Dănescu A. / Dănescu A. / BUC 184049
286. *Iris pumila* L. / Iris / pumila / L. / Europe / Romania / Muntenia / București / Botanical Garden „Dimitrie Brandza” / 27 / April / 1943 / Gușuleac M. / Camen-Comănescu P. / BUC 184070

287. *Iris pumila* L. / Iris / pumila / L. / Europe / Romania / Muntenia / București / Botanical Garden „Dimitrie Brandza” / 12 / April / 1973 / Dănescu A. / Dănescu A. / BUC 184888
288. *Iris pumila* L. / Iris / pumila / L. / Europe / Romania / Muntenia / București / Botanical Garden „Dimitrie Brandza” / 12 / April / 1973 / Dănescu A. / Dănescu A. / BUC 184889
289. *Iris pumila* L. / Iris / pumila / L. / Europe / Romania / Transilvania / Alba / Sebeș / Râpa Roșie / 3 / May / 1949 / Borza Al. / Borza Al. / BUC 285222
290. *Iris pumila* L. / Iris / pumila / L. / Europe / Romania / Transilvania / Alba / Sebeș / Râpa Roșie / 3 / May / 1949 / Borza Al. / Borza Al. / BUC 285223
291. *Iris pumila* L. / Iris / pumila / L. / Europe / Romania / Dobrogea / Constanța / Eforie Sud / 2 / May / 1964 / Morariu I. / Morariu I. / Herbarium I. Morariu / BUC 310940
292. *Iris pumila* L. / Iris / pumila / L. / Europe / Romania / Dobrogea / Constanța / Eforie Sud / 2 / May / 1964 / Morariu I. / Morariu I. / Herbarium I. Morariu / BUC 310941
293. *Iris pumila* L. / Iris / pumila / L. / Europe / Romania / Dobrogea / Constanța / Eforie Sud / 2 / May / 1964 / Morariu I. / Morariu I. / Herbarium I. Morariu / BUC 310942
294. *Iris pumila* L. / Iris / pumila / L. / Europe / Romania / Dobrogea / Constanța / Eforie Sud / 2 / May / 1964 / Morariu I. / Morariu I. / BUC 310943
295. *Iris pumila* L. / Iris / pumila / L. / Europe / Romania / Dobrogea / Constanța / Murfatlar / 18 / April / 1943 / Tarnavschi I. T. / Tarnavschi I. T. / BUC 315965
296. *Iris pumila* L. / Iris / pumila / L. / Europe / Romania / Dobrogea / Constanța / Murfatlar / 18 / April / 1943 / Tarnavschi I. T. / Tarnavschi I. T. / BUC 315966
297. *Iris pumila* L. / Iris / pumila / L. / Europe / Romania / Dobrogea / Constanța / Murfatlar / 18 / April / 1943 / Tarnavschi I. T. / Tarnavschi I. T. / BUC 315967
298. *Iris pumila* L. / Iris / pumila / L. / Europe / Romania / Transilvania / Alba / Sebeș / 9 / April / 1949 / Borza Al. / Borza Al. / BUC 319918
299. *Iris pumila* L. / Iris / pumila / L. / Europe / Romania / Transilvania / Sălaj / Vălișoara / Masivul Prisnel / "47°23'09,47"N" / "23°24'05,93"E" / 610 m / rock ledges, western slope / 17 / April / 2018 / Trella A. / Negrean G. / Herbarium G. Negrean / BUC 409695
300. *Iris pumila* L. / Iris / pumila / L. / Europe / Romania / Muntenia / București / 20 / April / 1956 / unknown / unknown / BUC 411291
301. *Iris reticulata* M.Bieb. / Iris / reticulata / Bieb. / Europe / Romania / 14 / March / 1970 / Diaconescu V. / Diaconescu V. / BUC 184071
302. *Iris ruthenica* Ker Gawl. / Iris / ruthenica / Ker. Gawl. / Europe / Romania / Muntenia / Prahova / Pietra arsă, Munții Bucegi / on steep, sunny slopes / 28 / June / 1960 / Forstner S. / Forstner S. / BUC 170206
303. *Iris ruthenica* Ker Gawl. / Iris / ruthenica / Ker. Gawl. / Europe / Romania / Transilvania / Brașov / Pădurea Bogății, Munții Perșani / on the cliffs / 2 / June / 1967 / Ularu P. / Ularu P. / Pedagogical Institute Brașov Herbarium / BUC 171794
304. *Iris ruthenica* Ker Gawl. / Iris / ruthenica / Ker. Gawl. / Europe / Romania / Transilvania / Cluj / Cluj-Napoca / Pădurea Hoia / 450 m / in herbosis / May / 1922 / Prodan I. / Prodan I. / Flora Romaniae Exsiccata a Horto et Museo Botanico Universitatis Clujensis Edita / BUC 180684
305. *Iris ruthenica* Ker Gawl. / Iris / ruthenica / Ker. Gawl. / Europe / Romania / Transilvania / Cluj / Cluj-Napoca / Pădurea Făget / 500-550 m / in herbis Querceto-Carpineti „Făget” / 7 / May / 1939 / Ghișa E. / Ghișa E. / Flora Romaniae Exsiccata a Museo Botanico Universitatis Clusienensis (In Timișoara) Edita / BUC 180685

306. *Iris ruthenica* Ker Gawl. / Iris / ruthenica / Ker. Gawl. / Europe / Romania / Muntenia / București / Botanical Garden „Dimitrie Brandza” / rare plants sector / 22 / April / 1975 / Mihăilescu S. / Mihăilescu S. / BUC 184016
307. *Iris ruthenica* Ker Gawl. / Iris / ruthenica / Ker. Gawl. / Europe / Romania / Muntenia / București / Botanical Garden „Dimitrie Brandza” / rare plants sector / 22 / April / 1975 / Mihăilescu S. / Mihăilescu S. / BUC 184017
308. *Iris ruthenica* Ker Gawl. / Iris / ruthenica / Ker. Gawl. / Europe / Romania / Muntenia / București / Botanical Garden „Dimitrie Brandza” / alpine sector / Mihăilescu S. / Mihăilescu S. / BUC 184018
309. *Iris ruthenica* Ker Gawl. / Iris / ruthenica / Ker. Gawl. / Europe / Romania / Muntenia / București / Botanical Garden „Dimitrie Brandza” / alpine sector / 22 / April / 1966 / Mihăilescu S. / Mihăilescu S. / BUC 184019
310. *Iris ruthenica* Ker Gawl. / Iris / ruthenica / Ker. Gawl. / Europe / Romania / Muntenia / București / Botanical Garden „Dimitrie Brandza” / 14 / April / 1972 / Mihăilescu S. / Mihăilescu S. / BUC 184020
311. *Iris ruthenica* Ker Gawl. / Iris / ruthenica / Ker. Gawl. / Europe / Romania / Muntenia / București / Botanical Garden „Dimitrie Brandza” / Constantinescu M. / Constantinescu M. / BUC 185540
312. *Iris ruthenica* Ker Gawl. / Iris / ruthenica / Ker. Gawl. / Europe / Romania / Muntenia / Prahova / Sinaia / Valea Babei, Munții Bucegi / unknown / unknown / BUC 271231
313. *Iris ruthenica* Ker Gawl. / Iris / ruthenica / Ker. Gawl. / Europe / Romania / Dobrogea / Tulcea / Măcin / June / 1974 / Botnariuc I. / Botnariuc I. / BUC 282414
314. *Iris ruthenica* Ker Gawl. / Iris / ruthenica / Ker. Gawl. / Europe / Romania / Vârful Surduc / 22 / June / 1955 / Tarnavschi I. T. / Rădulescu D. / BUC 285215
315. *Iris ruthenica* Ker Gawl. / Iris / ruthenica / Ker. Gawl. / Europe / Romania / Bucovina / Suceava / Bosanci / 350 m / in pascuis / 28 / April / 1972 / Ciubotariu C. / Ciubotariu C. / Flora Moldaviae et Dobrogeae Exsiccatam a Horto Botanico Universitatis „Al. I. Cuza” Iassiensis Editam / BUC 320200
316. *Iris ruthenica* Ker Gawl. / Iris / ruthenica / Ker. Gawl. / Europe / Romania / Muntenia / Prahova / Bușteni / Valea Jepilor, Munții Bucegi / 2000 m / meadow / 25 / June / 1987 / Buculei P. / Buculei P. / BUC 375374
317. *Iris ruthenica* subsp. *ruthenica* / Iris / caespitosa / Europe / Romania / Bucovina / Suceava / Bosanci / Fânețele Ponoare / 7 / June / 1959 / Morariu I. / Morariu I. / Herbarium I. Morariu / BUC 339896
318. *Iris ruthenica* subsp. *ruthenica* / Iris / caespitosa / Europe / Romania / Transilvania / Brașov / Brașov / Muntele Tâmpa / along the path / 27 / May / 1956 / Morariu I. / Morariu I. / Herbarium I. Morariu / BUC 339897
319. *Iris ruthenica* subsp. *ruthenica* / Iris / caespitosa / Europe / Romania / Muntenia / Prahova / Piatra arsă, Munții Bucegi / 1900-2000 m / 30 / June / 1943 / Tarnavschi I. T. / Tarnavschi I. T. / BUC 361201
320. *Iris sibirica* L. / Iris / sibirica / L. / Europe / Romania / 8 / May / 1946 / illegible / illegible / BUC 184060
321. *Iris sibirica* L. / Iris / sibirica / L. / Europe / Romania / 8 / May / 1946 / illegible / illegible / BUC 184061
322. *Iris sibirica* L. / Iris / sibirica / L. / Europe / Romania / Bucovina / Suceava / Bosanci / Dealul Strimbu / in damp hollows / 7 / June / 1964 / Morariu I. / Morariu I. / Herbarium I. Morariu / BUC 339886

323. *Iris sibirica* L. / Iris / sibirica / L. / Europe / Romania / Bucovina / Suceava / Bosanci / Dealul Strimbu / in damp hollows / 7 / June / 1964 / Morariu I. / Morariu I. / Herbarium I. Morariu / BUC 339887
324. *Iris sibirica* L. / Iris / sibirica / L. / Europe / Romania / Bucovina / Suceava / Bosanci / Fânețele Ponoare / through wet landslides, forming dense clusters / 7 / June / 1959 / Morariu I. / Morariu I. / Herbarium I. Morariu / BUC 339893
325. *Iris sibirica* L. / Iris / sibirica / L. / Europe / Romania / Bucovina / Suceava / Bosanci / Fânețele Ponoare / through wet landslides, forming dense clusters / 7 / June / 1959 / Morariu I. / Morariu I. / Herbarium I. Morariu / BUC 339894
326. *Iris sibirica* L. / Iris / sibirica / L. / Europe / Romania / Bucovina / Suceava / Bosanci / Fânețele Ponoare / through wet landslides / 7 / June / 1959 / Morariu I. / Morariu I. / Herbarium I. Morariu / BUC 339895
327. *Iris sintenisii* Janka / Iris / sintenisii / Janka / Europe / Romania / Muntenia / București / Botanical Garden „Dimitrie Brandza” / 9 / May / 1958 / Mihăilescu S. / Camen-Comănescu P. / BUC 184034
328. *Iris sintenisii* Janka / Iris / sintenisii / Janka / Europe / Romania / Muntenia / București / Botanical Garden „Dimitrie Brandza” / 22 / April / 1975 / Mihăilescu S. / Mihăilescu S. / BUC 184062
329. *Iris sintenisii* Janka / Iris / sintenisii / Janka / Europe / Romania / Muntenia / București / Botanical Garden „Dimitrie Brandza” / 22 / April / 1975 / Mihăilescu S. / Mihăilescu S. / BUC 184063
330. *Iris sintenisii* Janka / Iris / sintenisii / Janka / Europe / Romania / Muntenia / București / Botanical Garden „Dimitrie Brandza” / 26 / April / 1972 / Mihăilescu S. / Mihăilescu S. / BUC 184064
331. *Iris sintenisii* Janka / Iris / sintenisii / Janka / Europe / Romania / Muntenia / București / Botanical Garden „Dimitrie Brandza” / from seeds brought from Cluj / 9 / May / 1974 / Mihăilescu S. / Mihăilescu S. / BUC 184293
332. *Iris sintenisii* Janka / Iris / sintenisii / Janka / Europe / Romania / Muntenia / București / Botanical Garden „Dimitrie Brandza” / 7 / May / 1973 / Mihăilescu S. / Mihăilescu S. / BUC 184884
333. *Iris sintenisii* Janka / Iris / sintenisii / Janka / Europe / Romania / Muntenia / București / Botanical Garden „Dimitrie Brandza” / 7 / May / 1973 / Mihăilescu S. / Mihăilescu S. / BUC 184885
334. *Iris sintenisii* Janka / Iris / sintenisii / Janka / Europe / Romania / Muntenia / București / Botanical Garden „Dimitrie Brandza” / 7 / May / 1973 / Mihăilescu S. / Mihăilescu S. / BUC 184886
335. *Iris sintenisii* Janka / Iris / sintenisii / Janka / Europe / Romania / Muntenia / București / Botanical Garden „Dimitrie Brandza” / 7 / May / 1979 / Mihăilescu S. / Mihăilescu S. / BUC 350042
336. *Iris sintenisii* Janka / Iris / sintenisii / Janka / Europe / Romania / Dobrogea / Constanța / Pădurea Hagieni / 27 / August / Negrean G. / Negrean G. / Herbarium G. Negrean / BUC 409633
337. *Iris sintenisii* subsp. *brandzae* (Prodan) D.A.Webb & Chater / Iris / brandzae / Prodan / Europe / Romania / Muntenia / București / Botanical Garden „Dimitrie Brandza” / 22 / April / 1975 / Mihăilescu S. / Mihăilescu S. / BUC 184024
338. *Iris sintenisii* subsp. *brandzae* (Prodan) D.A.Webb & Chater / Iris / brandzae / Prodan / Europe / Romania / Muntenia / București / Botanical Garden „Dimitrie Brandza” / 22 / April / 1975 / Mihăilescu S. / Mihăilescu S. / BUC 184025

339. *Iris sintenisii* subsp. *brandzae* (Prodan) D.A.Webb & Chater / Iris / brandzae / Europe / Romania / Muntenia / Buzău / Gura Făgetului / 7 / May / 1974 / Mihăilescu S. / Mihăilescu S. / BUC 184295
340. *Iris sintenisii* subsp. *brandzae* (Prodan) D.A.Webb & Chater / Iris / brandzae / Prodan / Europe / Romania / Muntenia / București / Botanical Garden „Dimitrie Brandza” / brought from Frăsinet, Buzău / 9 / May / 1974 / Mihăilescu S. / Mihăilescu S. / BUC 184298
341. *Iris spuria* L. / Iris / spuria / L. / Europe / Romania / Muntenia / București / Botanical Garden „Dimitrie Brandza” / 23 / May / 1996 / Anastasiu P. / Anastasiu P. / BUC 375020
342. *Iris stocksii* (Baker) Boiss. / Iris / stocksii / Boiss / Asia / Iran / Tehran / Tehran / Tehran / 6000 ft / rocky and soil covered hillsides widespread and common though sparsely scattered / 30 / April / 1963 / unknown / unknown / Ex. Herb. Hort. Bot. Reg. Kew. / BUC 170533
343. *Iris variegata* L. / Iris / variegata / L. / Europe / Romania / Banat / Timiș / Banloc / pheasantry / 31 / May / 1948 / Borza Al. / Borza Al. / BUC 171385
344. *Iris variegata* L. / Iris / variegata / L. / Europe / Romania / Muntenia / Giurgiu / Greaca / 60 m / 7 / June / 1963 / Popescu A. et Nedelcu G. / Popescu A. et Nedelcu G. / BUC 176272
345. *Iris variegata* L. / Iris / variegata / L. / Europe / Romania / Transilvania / Cluj / Cluj-Napoca / Fînețele Clujului / 400 m / in foenatis / 2 / June / 1946 / Ghișa E. / Ghișa E. / Flora Romaniae Exsiccata a Horto et Museo Botanico Universitatis Clujensis Edita / BUC 180686
346. *Iris variegata* L. / Iris / variegata / L. / Europe / Romania / Muntenia / București / Botanical Garden „Dimitrie Brandza” / 5 / May / 1960 / Dănescu A. / Dănescu A. / BUC 184065
347. *Iris variegata* L. / Iris / variegata / L. / Europe / Romania / Muntenia / București / Botanical Garden „Dimitrie Brandza” / brought from Bobla from the bushes in 1936 / 9 / June / 1940 / unknown / unknown / BUC 184066
348. *Iris variegata* L. / Iris / variegata / L. / Europe / Romania / Muntenia / București / Botanical Garden „Dimitrie Brandza” / 19 / May / 1956 / unknown / unknown / BUC 267879
349. *Iris variegata* L. / Iris / variegata / L. / Europe / Romania / Muntenia / București / Botanical Garden „Dimitrie Brandza” / 19 / May / 1956 / unknown / unknown / BUC 267880
350. *Iris variegata* L. / Iris / variegata / L. / Europe / Romania / Muntenia / București / Botanical Garden „Dimitrie Brandza” / 19 / May / 1956 / unknown / unknown / BUC 267881
351. *Iris variegata* L. / Iris / variegata / L. / Europe / Romania / Transilvania / Alba / Sebeș / in the steppes of Viile Românilor / 30 / May / 1949 / Borza Al. / Borza Al. / BUC 271232
352. *Iris variegata* L. / Iris / variegata / L. / Europe / Romania / Transilvania / Cluj / Cluj-Napoca / Fînețele Clujului / 400 m / in foenatis / 2 / June / 1946 / Ghișa E. / Ghișa E. / Flora Romaniae Exsiccata a Horto et Museo Botanico Universitatis Clujensis Edita / BUC 274489
353. *Iris variegata* L. / Iris / variegata / Europe / Romania / 9 / May / 1943 / Tarnavschi I. T. / Tarnavschi I. T. / BUC 283057
354. *Iris variegata* L. / Iris / variegata / Europe / Romania / Muntenia / Ilfov / Buftea / Pădurea Râioasa / 26 / May / 1946 / Tarnavschi I. T. / Tarnavschi I. T. / BUC 315756

355. *Iris variegata* L. / Iris / variegata / Europe / Romania / Muntenia / Ilfov / Buftea / Pădurea Râioasa / 26 / May / 1946 / Tarnavschi I. T. / Tarnavschi I. T. / BUC 315757
356. *Iris variegata* L. / Iris / variegata / Europe / Romania / Muntenia / Ilfov / Buftea / Pădurea Râioasa / 26 / May / 1946 / Tarnavschi I. T. / Tarnavschi I. T. / BUC 315758
357. *Iris variegata* L. / Iris / variegata / Europe / Romania / Muntenia / Ilfov / Buftea / Pădurea Râioasa / 26 / May / 1946 / Tarnavschi I. T. / Tarnavschi I. T. / BUC 315759
358. *Iris variegata* L. / Iris / variegata / Europe / Romania / Muntenia / Ilfov / Buftea / Pădurea Râioasa / 26 / May / 1946 / Tarnavschi I. T. / Tarnavschi I. T. / BUC 315760
359. *Iris variegata* L. / Iris / variegata / Europe / Romania / Muntenia / Ilfov / Buftea / Pădurea Râioasa / 26 / May / 1946 / Tarnavschi I. T. / Tarnavschi I. T. / BUC 315761
360. *Ixia purpureorosea* G.J.Lewis / Ixia / purpureorosea / Lewis / Africa / South Africa / Western Cape / West Coast / Saldanha bay / 9 / September / 1966 / Barker W. F. / Lewis G. J. / National Botanic Gardens of South Africa, Kirstenbosch, Newlands, C.P. / BUC 350332
361. *Ixia purpureorosea* G.J.Lewis / Ixia / purpureorosea / Lewis / Africa / South Africa / Western Cape / West Coast / Saldanha bay / 9 / September / 1966 / Barker W. F. / Lewis G. J. / National Botanic Gardens of South Africa, Kirstenbosch, Newlands, C.P. / BUC 350333
362. *Klattia stokoei* L.Guthrie / Klattia / stokoei / L.Guthrie / Africa / South Africa / Western Cape / Overberg / Caledon / Rezervația Botanică Harold Porter / 1500 ft / 30 / October / 1963 / Topper W. / Lewis G. J. / National Botanic Gardens of South Africa, Kirstenbosch, Newlands, C.P. / BUC 350357
363. *Moraea brachygyne* (Schltr.) Goldblatt / Homeria / brachygyne / Schltr. / Africa / South Africa / Northern Cape / Namakwa / Calvinia / 23 / July / 1961 / Lewis G. J. / Lewis G. J. / National Botanic Gardens of South Africa, Kirstenbosch, Newlands, C.P. / BUC 350368
364. *Moraea lurida* Ker Gawl. / Moraea / lurida / Ker / Africa / South Africa / Western Cape / Overberg / Caledon / various colors / 21 / October / 1966 / Chambers B. L. / Lewis G. J. / National Botanic Gardens of South Africa, Kirstenbosch, Newlands, C.P. / BUC 350369
365. *Moraea polyanthos* L.f. / Homeria / liliacina / L. Bol. / Africa / South Africa / Western Cape / Garden Route / Hartenbos / 10 / May / 1961 / Barker W. F. / Lewis G. J. / National Botanic Gardens of South Africa, Kirstenbosch, Newlands, C.P. / BUC 350320
366. *Nivenia binata* Klatt / Nivenia / binata / Klatt / Africa / South Africa / Western Cape / Garden Route / Oudtshoorn / Swartberg Pass / 5000 ft / blue flowers / 29 / September / 1961 / Rycroft H. B. / Lewis G. J. / National Botanic Gardens of South Africa, Kirstenbosch, Newlands, C.P. / BUC 350358
367. *Nivenia binata* Klatt / Nivenia / binata / Klatt / Africa / South Africa / Western Cape / Garden Route / Oudtshoorn / Swartberg Pass / 5000 ft / blue flowers / 29 / September / 1961 / Rycroft H. B. / Lewis G. J. / National Botanic Gardens of South Africa, Kirstenbosch, Newlands, C.P. / BUC 350359
368. *Nivenia binata* Klatt / Nivenia / binata / Klatt / Africa / South Africa / Western Cape / Garden Route / Oudtshoorn / Swartberg Pass / 5000 ft / blue flowers / 29 / September / 1961 / Rycroft H. B. / Lewis G. J. / National Botanic Gardens of South Africa, Kirstenbosch, Newlands, C.P. / BUC 350360
369. *Sisyrinchium angustifolium* Mill. / Sisyrinchium / angustifolium / Mill. / Europe / Romania / Maramureș / Maramureș / Petrova / 373 m / 2 / June / 1942 / Coman A. /

- Coman A. / Flora Romaniae Exsiccata a Horto et Museo Botanico Universitatis Clujensis Edita / BUC 180913
370. *Sisyrinchium angustifolium* Mill. / Sisyrinchium / angustifolium / Mill. / Europe / Romania / Moldova / Bacău / Târgu Ocna / 450 m / in pratis humidis / 22 / June / 1970 / Pascal P. / Pascal P. / Flora Exsiccata Districti Bacoviensis (Romania) a Museo Scientiarum Naturalium Bacoviensis Edita / BUC 260964
371. *Sisyrinchium angustifolium* Mill. / Sisyrinchium / angustifolium / Mill. / Europe / Romania / Maramureş / Maramureş / Petrova / 373 m / 2 / June / 1942 / Coman A. / Coman A. / Flora Romaniae Exsiccata a Horto et Museo Botanico Universitatis Clujensis Edita / BUC 271290
372. *Sisyrinchium angustifolium* Mill. / Sisyrinchium / angustifolium / Mill. / Europe / Romania / Maramureş / Maramureş / Petrova / 373 m / 2 / June / 1942 / Coman A. / Coman A. / Flora Romaniae Exsiccata a Horto et Museo Botanico Universitatis Clujensis Edita / BUC 271291
373. *Sisyrinchium angustifolium* Mill. / Sisyrinchium / angustifolium / Mill. / Europe / Romania / Maramureş / Maramureş / Petrova / 373 m / 2 / June / 1942 / Coman A. / Coman A. / Flora Romaniae Exsiccata a Horto et Museo Botanico Universitatis Clujensis Edita / BUC 271292
374. *Sisyrinchium angustifolium* Mill. / Sisyrinchium / angustifolium / Mill. / Europe / Romania / Moldova / Bacău / Târgu Ocna / 450 m / in pratis humidis / 22 / June / 1970 / Pascal P. / Pascal P. / Flora Exsiccata Districti Bacoviensis (Romania) a Museo Scientiarum Naturalium Bacoviensis Edita / BUC 319937
375. *Sisyrinchium angustifolium* Mill. / Sisyrinchium / angustifolium / Mill. / Europe / Romania / Moldova / Bacău / Poiana Sărată / 480 m / 22 / June / 1972 / Ţopa E. / Ţopa E. / Flora Moldaviae et Dobrogeae Exsiccata a Horto Botanico Universitatis „Al. I. Cuza” Iassiensis Editam / BUC 320239
376. *Sisyrinchium angustifolium* Mill. / Sisyrinchium / angustifolium / Mill. / Europe / Romania / Maramureş / Maramureş / Petrova / 373 m / 2 / June / 1942 / Coman A. / Coman A. / Flora Romaniae Exsiccata a Horto et Museo Botanico Universitatis Clujensis Edita / BUC 320904
377. *Sisyrinchium angustifolium* Mill. / Sisyrinchium / angustifolium / Mill. / Europe / Romania / Maramureş / Maramureş / Petrova / 373 m / 2 / June / 1943 / Coman A. / Coman A. / Flora Romaniae Exsiccata a Horto et Museo Botanico Universitatis Clujensis Edita / BUC 320905
378. *Sisyrinchium angustifolium* Mill. / Sisyrinchium / angustifolium / Mill. / Europe / Romania / Bucovina / Suceava / Câmpulung Moldovenesc / in dry meadows / 12 / June / 1951 / Grapini V et Seghedui T. / Grapini V et Seghedui T. / Herbarium I. Morariu / BUC 373826
379. *Sisyrinchium angustifolium* Mill. / Sisyrinchium / angustifolium / Mill. / Europe / Romania / Bucovina / Suceava / Câmpulung Moldovenesc / in dry meadows / 12 / June / 1951 / Grapini V et Seghedui T. / Grapini V et Seghedui T. / Herbarium I. Morariu / BUC 373827
380. *Sisyrinchium montanum* Greene / Sisyrinchium / montanum / Greene / Europe / Romania / Maramureş / Maramureş / Sighetu Marmaţiei / Valea Şugău / ad marginem silvarum / 8 / June / 2012 / Negrean G. / Negrean G. / Herbarium G. Negrean / BUC 403067
381. *Sparaxis grandiflora* (D.Delaroche) Ker Gawl. / Sparaxis / grandiflora / (Delaroche) Ker / Africa / South Africa / Western Cape / Cape Winelands / Tulbagh / 9 / September

- / 1960 / Lewis G. J. / Lewis G. J. / National Botanic Gardens of South Africa, Kirstenbosch, Newlands, C.P. / BUC 350370
382. *Sparaxis grandiflora* (D.Delaroche) Ker Gawl. / Sparaxis / grandiflora / (Delaroche) Ker / Africa / South Africa / Western Cape / Cape Winelands / Tulbagh / 9 / September / 1960 / Lewis G. J. / Lewis G. J. / National Botanic Gardens of South Africa, Kirstenbosch, Newlands, C.P. / BUC 350371
383. *Sparaxis tricolor* (Schneev.) Ker Gawl. / Sparaxis / tricolor / Ker. / Africa / South Africa / Northern Cape / Namakwa / Calvinia / Grasberg / 16 / September / 1961 / Barker W. F. / Lewis G. J. / National Botanic Gardens of South Africa, Kirstenbosch, Newlands, C.P. / BUC 350317
384. *Sparaxis tricolor* (Schneev.) Ker Gawl. / Sparaxis / tricolor / Ker. / Africa / South Africa / Northern Cape / Namakwa / Calvinia / Grasberg / 16 / September / 1961 / Barker W. F. / Lewis G. J. / National Botanic Gardens of South Africa, Kirstenbosch, Newlands, C.P. / BUC 350318
385. *Tritoniopsis lesliei* L.Bolus / Tritoniopsis / lesliei / L. Bol. / Africa / South Africa / Western Cape / Cape Winelands / Ceres / 11 / November / 1959 / Lewis G. J. / Lewis G. J. / National Botanic Gardens of South Africa, Kirstenbosch, Newlands, C.P. / BUC 350354
386. *Tritoniopsis lesliei* L.Bolus / Tritoniopsis / lesliei / L. Bol. / Africa / South Africa / Western Cape / Cape Winelands / Ceres / 11 / November / 1959 / Lewis G. J. / Lewis G. J. / National Botanic Gardens of South Africa, Kirstenbosch, Newlands, C.P. / BUC 350355
387. *Tritoniopsis lesliei* L.Bolus / Tritoniopsis / lesliei / L. Bol. / Africa / South Africa / Western Cape / Cape Winelands / Ceres / 11 / November / 1959 / Lewis G. J. / Lewis G. J. / National Botanic Gardens of South Africa, Kirstenbosch, Newlands, C.P. / BUC 350356
388. *Tritoniopsis parviflora* (Jacq.) G.J.Lewis / Tritoniopsis / parviflora / (Jacq.) Lewis / Africa / South Africa / Western Cape / Cape Winelands / Ceres / rocky mountains slopes near railway crossing / 12 / November / 1959 / Lewis G. J. / Lewis G. J. / National Botanic Gardens of South Africa, Kirstenbosch, Newlands, C.P. / BUC 350350
389. *Tritoniopsis parviflora* (Jacq.) G.J.Lewis / Tritoniopsis / parviflora / (Jacq.) Lewis / Africa / South Africa / Western Cape / Cape Winelands / Ceres / rocky mountains slopes near railway crossing / 12 / November / 1959 / Lewis G. J. / Lewis G. J. / National Botanic Gardens of South Africa, Kirstenbosch, Newlands, C.P. / BUC 350351
390. *Tritoniopsis revoluta* (Burm.f.) Goldblatt / Tritoniopsis / apiculata / (Bolus F.) Lewis / Africa / South Africa / Western Cape / Garden Route / Riversdale / Gracia's Pass / 6 / April / 1959 / Lewis G. J. / Lewis G. J. / National Botanic Gardens of South Africa, Kirstenbosch, Newlands, C.P. / BUC 350345
391. *Tritoniopsis revoluta* (Burm.f.) Goldblatt / Tritoniopsis / apiculata / (Bolus F.) Lewis / Africa / South Africa / Western Cape / Garden Route / Riversdale / Gracia's Pass / 6 / April / 1959 / Lewis G. J. / Lewis G. J. / National Botanic Gardens of South Africa, Kirstenbosch, Newlands, C.P. / BUC 350346
392. *Tritoniopsis revoluta* (Burm.f.) Goldblatt / Tritoniopsis / apiculata / (Bolus F.) Lewis / Africa / South Africa / Western Cape / Garden Route / Riversdale / Gracia's Pass / 6 / April / 1959 / Lewis G. J. / Lewis G. J. / National Botanic Gardens of South Africa, Kirstenbosch, Newlands, C.P. / BUC 350347

Appendix 2 List of valid names of Iridaceae taxa and their number of specimens from BUC Herbarium

Valid name/ Number of specimens		Valid name/ Number of specimens	
<i>Aristea racemosa</i> Baker	1	<i>Iris halophila</i> Pall.	5
<i>Aristea spiralis</i> (L.f.) Ker Gawl.	1	<i>Iris iberica</i> Steven	1
<i>Crocoshia</i> × <i>crocoshiaflora</i> (Lemoine) N.E.Br.	7	<i>Iris imbricata</i> Lindl.	1
<i>Crocus banaticus</i> J.Gay	8	<i>Iris lactea</i> Pall.	2
<i>Crocus biflorus</i> Mill.	6	<i>Iris latifolia</i> (Mill.) Voss	1
<i>Crocus chrysanthus</i> (Herb.) Herb.	14	<i>Iris orientalis</i> Mill.	1
<i>Crocus corsicus</i> Vanucchi	3	<i>Iris pontica</i> Zapał.	1
<i>Crocus danubensis</i> Kernd., Pasche, Randjel. & V.Randjel.	8	<i>Iris pseudacorus</i> L.	25
<i>Crocus flavus</i> subsp. <i>flavus</i>	19	<i>Iris pumila</i> L.	21
<i>Crocus flavus</i> Weston	20	<i>Iris reticulata</i> M.Bieb.	1
<i>Crocus heuffelianus</i> Herb.	29	<i>Iris ruthenica</i> Ker Gawl.	15
<i>Crocus korolkowii</i> Maw & Regel	3	<i>Iris ruthenica</i> subsp. <i>ruthenica</i>	3
<i>Crocus olivieri</i> J.Gay	3	<i>Iris sibirica</i> L.	7
<i>Crocus pallasii</i> Goldb.	8	<i>Iris sintenisii</i> Janka	10
<i>Crocus variegatus</i> Hoppe & Hornsch.	2	<i>Iris sintenisii</i> subsp. <i>brandzae</i> (Prodan) D.A.Webb & Chater	4
<i>Dietes iridioides</i> subsp. <i>iridioides</i>	2	<i>Iris spuria</i> L.	1
<i>Ferraria crispera</i> Burm.	2	<i>Iris stocksii</i> (Baker) Boiss.	1
<i>Freesia</i> × <i>kewensis</i> J.Wright bis	2	<i>Iris variegata</i> L.	17
<i>Freesia refracta</i> (Jacq.) Klatt	4	<i>Ixia purpureorosea</i> G.J.Lewis	2
<i>Gladiolus</i> × <i>hybridus</i> C.Morren	1	<i>Klattia stokoei</i> L.Guthrie	1
<i>Gladiolus communis</i> L.	1	<i>Moraea brachygyne</i> (Schltr.) Goldblatt	1
<i>Gladiolus illyricus</i> W.D.J.Koch	3	<i>Moraea lurida</i> Ker Gawl.	1
<i>Gladiolus imbricatus</i> L.	51	<i>Moraea polyanthos</i> L.f.	1
<i>Gladiolus vandermerwei</i> (L.Bolus) Goldblatt & M.P.de Vos	1	<i>Nivenia binata</i> Klatt	3
<i>Iris</i> × <i>florentina</i> L.	3	<i>Sisyrinchium angustifolium</i> Mill.	11
<i>Iris</i> × <i>germanica</i> L.	4	<i>Sisyrinchium montanum</i> Greene	1
<i>Iris aphylla</i> L.	11	<i>Sparaxis grandiflora</i> (D.Delaroche) Ker Gawl.	2
<i>Iris dichotoma</i> Pall.	6	<i>Sparaxis tricolor</i> (Schneev.) Ker Gawl.	2
<i>Iris domestica</i> (L.) Goldblatt & Mabb.	3	<i>Tritoniopsis lesliei</i> L.Bolus	3

Valid name/ Number of specimens	Valid name/ Number of specimens
<i>Iris ensata</i> Thunb. 2	<i>Tritoniopsis parviflora</i> (Jacq.) G.J.Lewis 2
<i>Iris graminea</i> L. 14	<i>Tritoniopsis revoluta</i> (Burm.f.) Goldblatt 3

Appendix 3 List of collectors and the corresponding number of Iridaceae specimens from BUC Herbarium

Collectors / Number of specimens	Collectors / Number of specimens
Anastasiu P. 46	Iordan T. 1
Andrei M. 2	Ivan D. 2
Artenie N. 1	Lewis G.J. 14
Barker W.F. 7	Lucescu T. 1
Becheru E. 1	Mihai M. 1
Beldie 2	Mihăilescu S. 48
Borza Al. 18	Mitroiu N. 1
Borza Al., Grințescu I., Nyárády E.I. et Gürler C. 1	Morariu I. 24
Boscaiu N., Codoreanu V. et Țopa E. 2	Neacșu M. 3
Botnariuc I. 1	Nedelcu G. 17
Bratcovici A. 1	Negrean G. 7
Buculei P. 1	Negrean G. et Anastasiu P. 1
Buia Al. 2	Negrean G. et Ciortan I. 1
Buia Al., Păun M., Cîrțu D., Maloș C. et Olaru M. 2	Nyárády E.I. 1
Bujorean G. 3	Opriș T. 1
Burduja C. et Răvăruț M. 2	Pascal P. 2
Burtescu I. 1	Paucă A. 1
Chambers B.L. 1	Paucă A. et Andrei M. 1
Chelariu A.M. 1	Petria E. 2
Ciubotariu C. 1	Popescu A. et Nedelcu G. 1
Colgiu M. 1	Prodan I. 1
Coman A. 6	Radu I. 2
Constantinescu M. 3	Rebhuhn D. 1
Cretzoiu P. 1	Rycroft H.B. 3
Dănescu A. 9	Simion D. 1
Diaconescu V. 15	Soran V. 1
Dobrescu C. et Turcu I. 3	Synge et Furse 5

Collectors / Number of specimens		Collectors / Number of specimens	
Dumbrăveanu C.	1	Tarnavski I. T.	12
Forstner S.	10	Țopa E.	1
Gheorghe F. et Ilie M.	1	Țopa E. et Codoreanu V.	3
Ghișa E.	4	Topper W.	1
Ghițulescu I.	1	Trella A.	1
Grapini V et Seghedui T.	2	Ularu P.	1
Grințescu G.P.	4	Urziceanu M.	2
Groza U.	2	Velea A.	1
Gușuleac M.	19	illegible	8
Iacobaie M.	1	unknown	38
Ilie M.	1		

Appendix 4 List of Exsiccata/Herbaria and the corresponding number of Iridaceae specimens from BUC Herbarium

Exsiccata/ Number of specimens		Herbaria / Number of specimens	
Ex. Herb. Hort. Bot. Reg. Kew.	7	Herbarium G. Negrean	9
Flora Exsiccata Districti Bacoviensis (Romania) a Museo Scientiarum Naturalium Bacoviensis Edita	2	Herbarium I. Morariu	21
Flora Moldaviae et Dobrogeae Exsiccata a Horto Botanico Universitatis „Al. I. Cuza” Iassiensis Editam	6	Faculty of Silviculture Herbarium	1
Flora Olteniae Exsiccata, Hortus Botanicus Institutii Agronomici „T. Vladimirescu” Craiova - Republica Socialista Romania	4	Pedagogical Institute Braşov Herbarium	1
Flora Romaniae Exsiccata a Horto et Museo Botanico Universitatis Clujensis Edita	25		
Flora Romaniae Exsiccata a Museo Botanico Universitatis Clusienensis (In Timișoara) Edita	15		
National Botanic Gardens of South Africa, Kirstenbosch, Newlands, C.P.	26		